



SLS-DSU

SCOTTISH LONGITUDINAL STUDY
DEVELOPMENT & SUPPORT UNIT

NEETs in Scotland: a longitudinal analysis of health effects of NEET experiences

Zhiqiang Feng

University of Edinburgh

Contents

- Overview
- Research questions
- Data and methods
- Preliminary results
- Conclusions

Definition

- **NEET**—young people **N**ot in **E**mployment, **E**ducation or **T**raining
- The high level of NEETs is regarded as a serious social problem



BRIEFING

Number of

NEET
in E
Emp



Statistical bulletin: Yo

Part of Young People not in Educa

Released: 26 February 2015

Contents

For October to December 2014

In this bulletin

Total Young People who were
Not in Education, Employment
or Training (NEET)

Unemployed Young People who
were NEET

Economically Inactive Young
People who were NEET

Quality Information

Background notes

Statistical contacts

MailOnline



Home

Latest

a member



sign in



subscribe



search

politics sport football opinion culture business lifestyle fashion environm

society law scotland wales northern ireland education media

Number of young people classed as 'neets' hits record 1.16m

Call to tackle youth joblessness as numbers not in employment, education or training rise 137,000 in the last quarter

Share what job

- Half
- They
- Rep
'far'

By SARAH

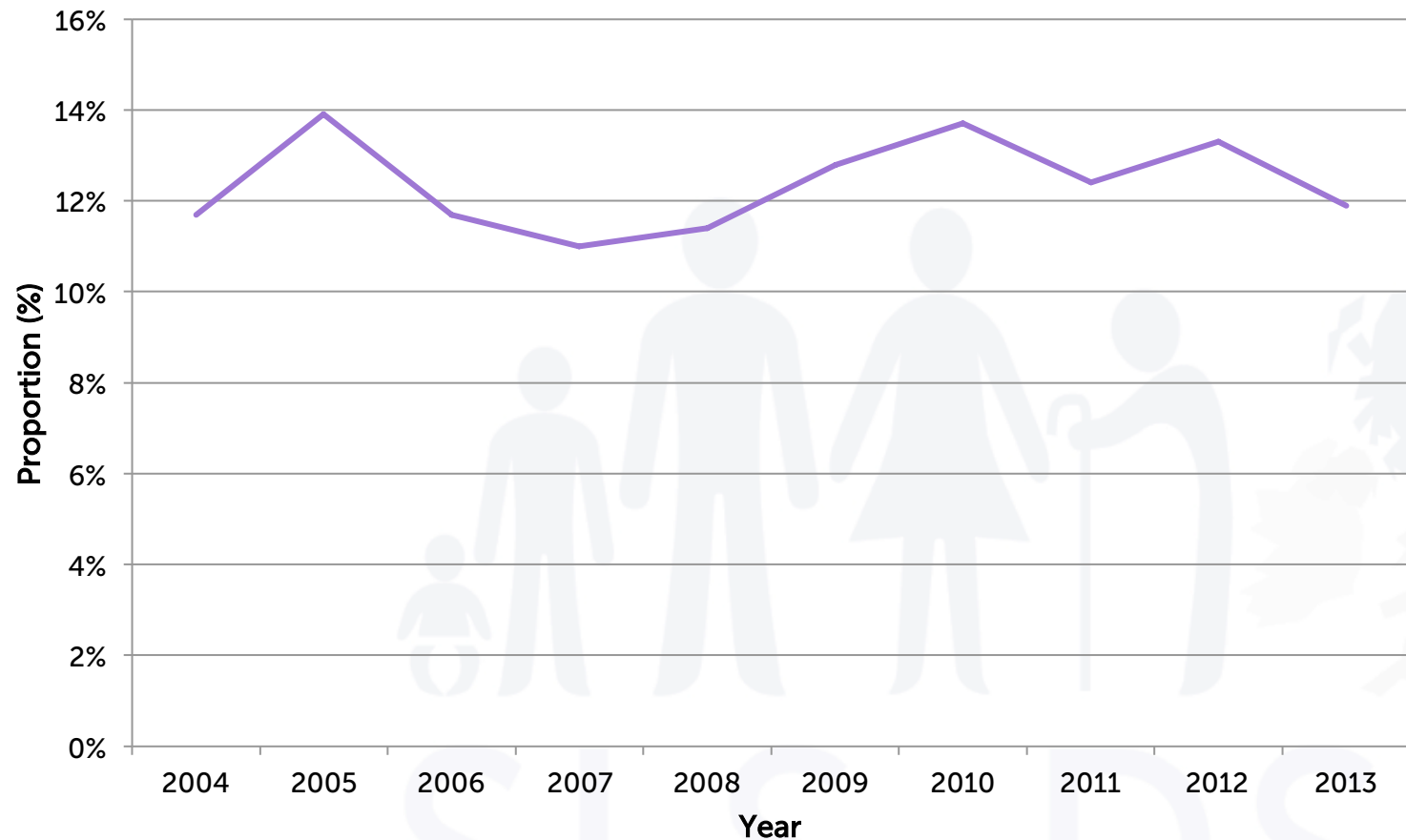
PUBLISHED



Guardian Member and support fearless investigative journalism

Become a supporter →

Proportion of NEETs in Scotland 2004-2013



Overview

- In Scotland NEETs are usually defined as those aged 16-19.
- Training Programmes: Modern Apprentices, Skillseekers, Get Ready for Work, Training for Work
- Financial schemes: EMAs

Previous findings

- There is a consistent scarring effect for being unemployed youth in later labour market participation and payment penalty;
- There is a negative effect of NEET experiences on physical, psychological health, and well-being;
- The effects of NEET vary with gender, males are shown to suffer poorer performance in labour market while females are shown to suffer in terms of both employment and health.

Previous studies

- Most studies are descriptive
- Self-reported health outcomes
- Lack of research on long-term effects of NEET on health, especially in the contemporary context

Research questions

- *To what extent does NEET status affect health in the long term?*

Data

The Scottish Longitudinal Study (SLS)

- Based on 20 dates of birth, semi-random sample, 5.3% of Scottish population (N=260,000)
- Record linking through census, vital registrations, patient records, school census
- Starts from 1991

Study population



N = 8,588, 11.7% NEETs in 1991

Hospitalisation

- SMR01, ISD (Information Service Department)
- 2001-2010
- Any admission during the period
- Female pregnancy related admission excluded

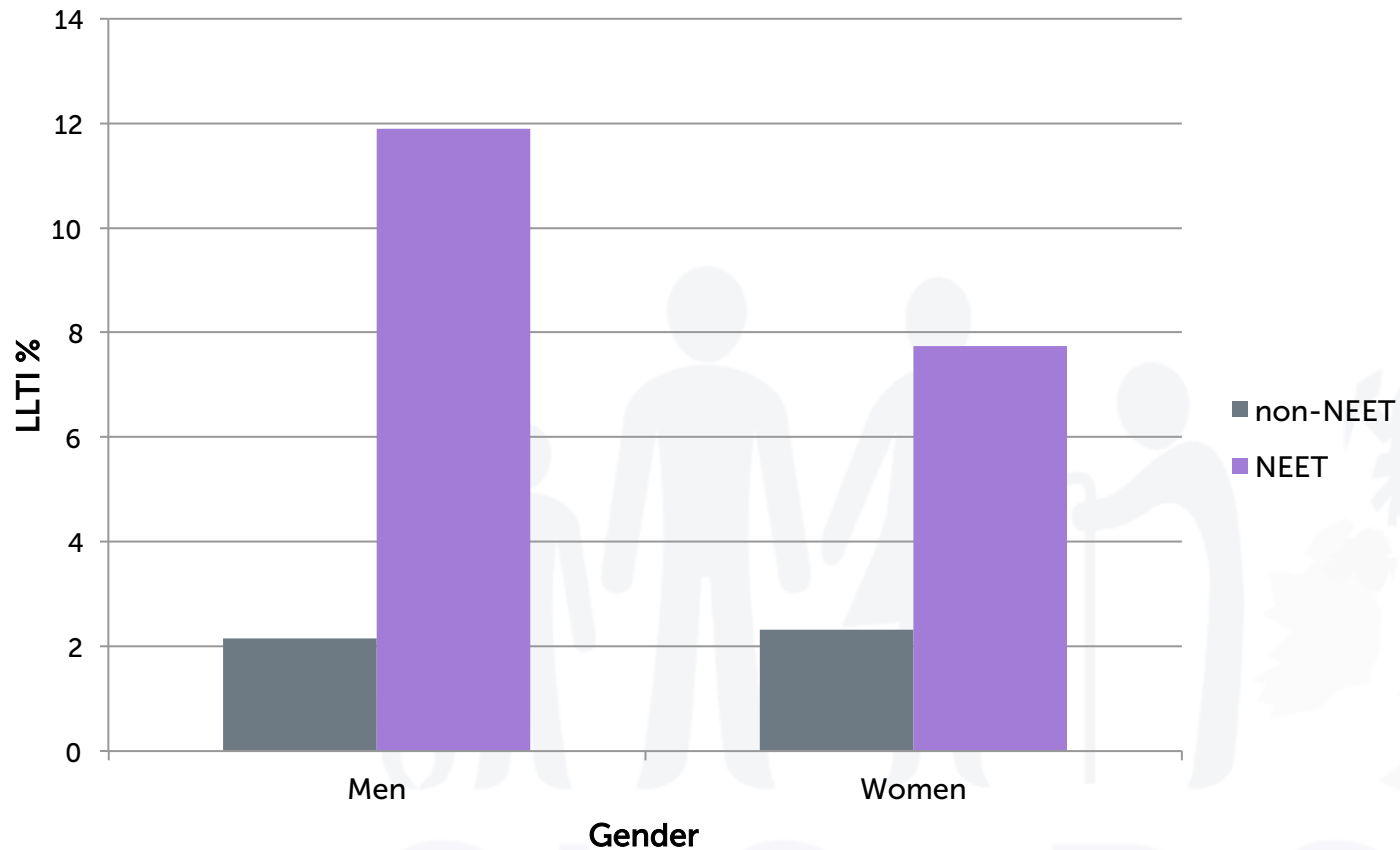
Prescribing data

- ISD (Information Service Department)
- Prescribing information system
 - 2009 – 2012
 - BNF (British National Formulary codes):
 - 4.2 (antipsychotics)
 - 4.3 (anti-depressants)
 - 4.1.2 (anxiolytics)

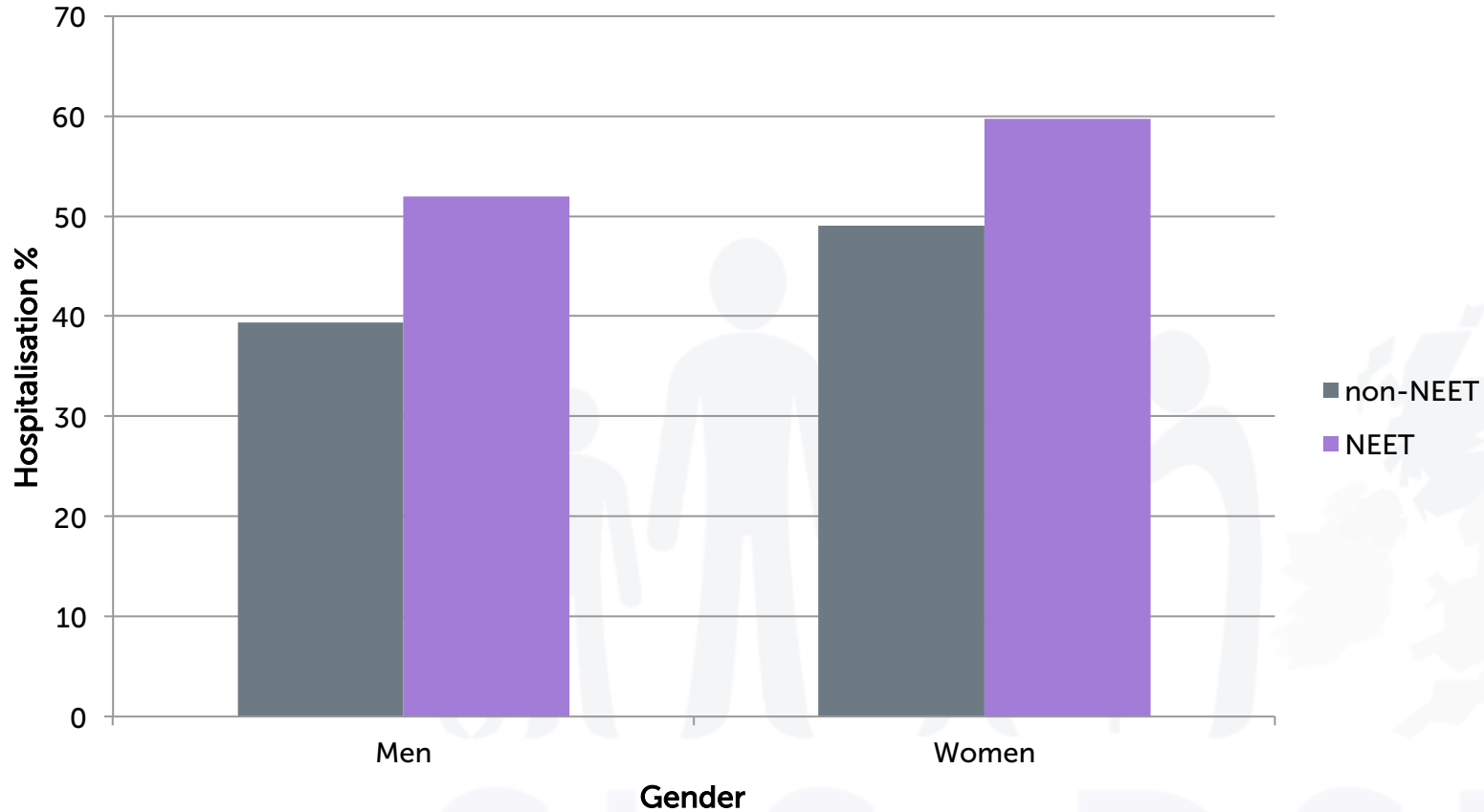
Methods

- Descriptive analysis
 - Summary by age, gender, qualifications, housing tenure, health
- Statistical analysis:
 - logit regression
 - Outcome
 - hospitalisation, 2001- 2010
 - Poor mental health, 2009-2012

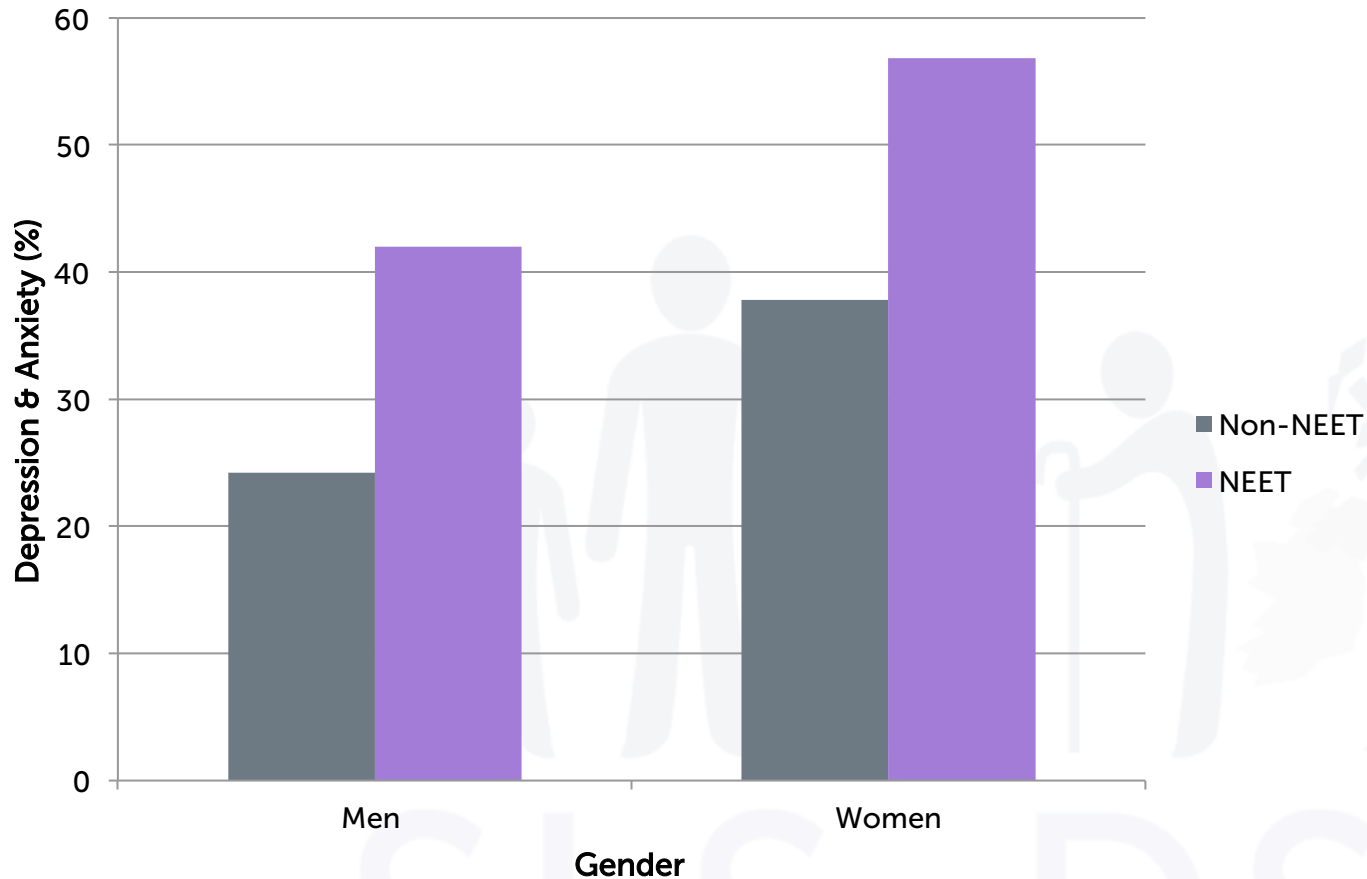
LLTI in 1991



Hospitalisation 2001-2010 by gender and 1991 NEET status



Depression & anxiety 2009-2012 by gender and 1991 NEET status



Modelling analysis

- Outcomes

- 1. Hospitalisation 2001-2010
- 2. Depression and anxiety, 2009-2012

- Confounders: age, gender, educational qualification, tenure, deprivation, council

- Variable of interest:

- **NEET status 1991**
- **Interaction of 1991 NEET and 2001 NEET status**

Status in 1991 and 2001

1991

NEET

NEET

Non-NEET

Non-NEET

2001

NEET

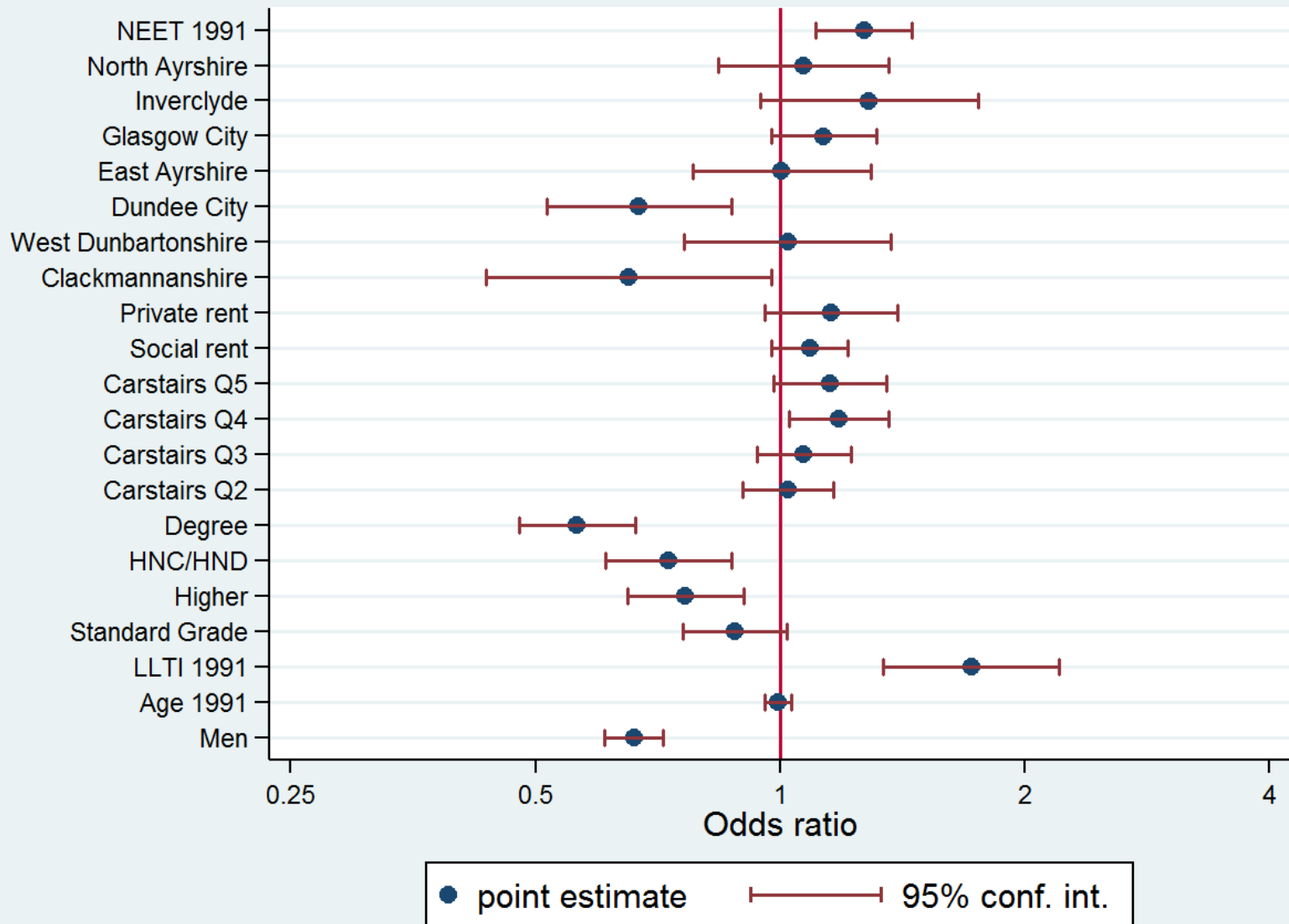
non-NEET

NEET

non-NEET



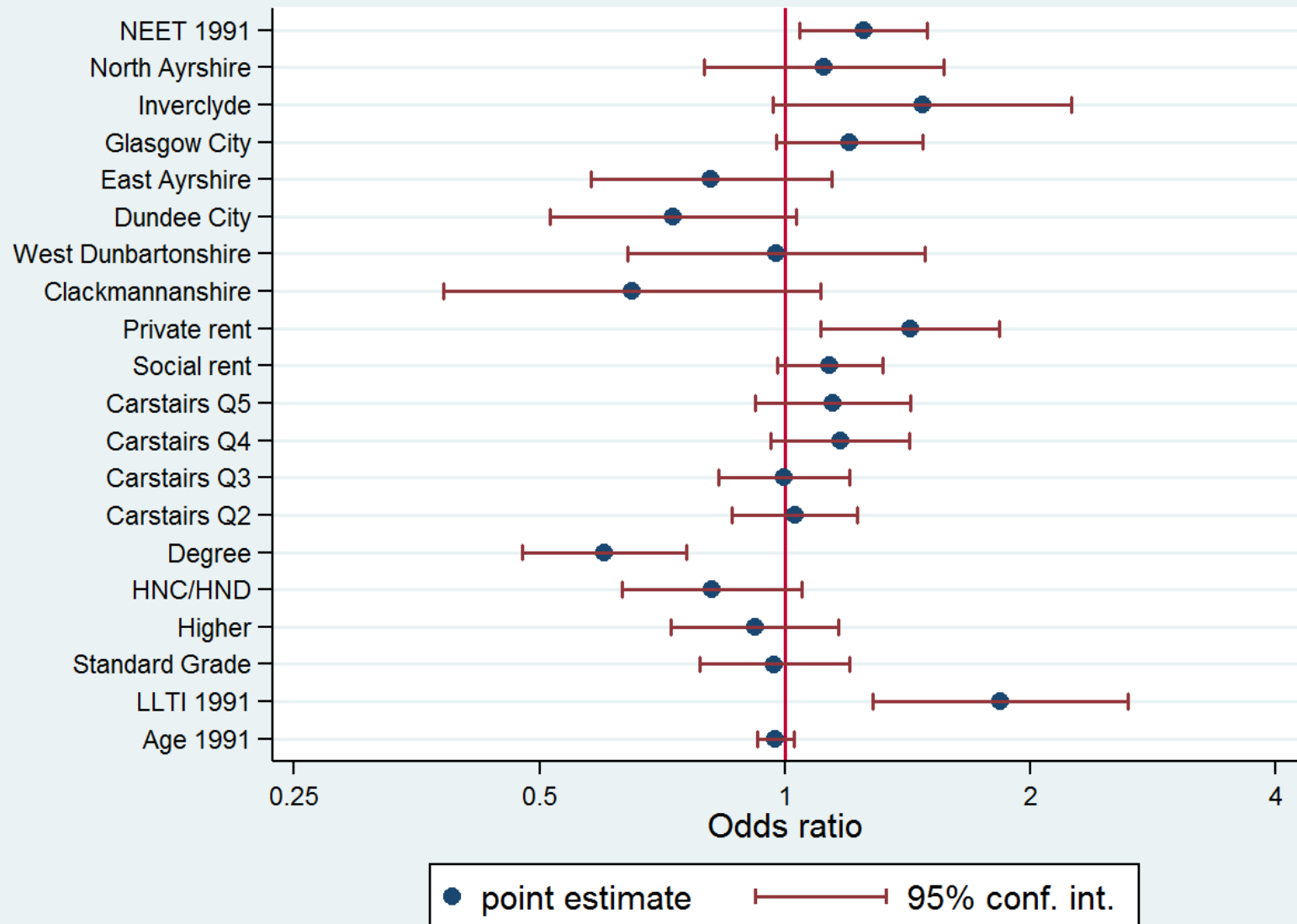
Hospitalisation, 2001-2010, all



Source: Scottish Longitudinal Study (SLS)

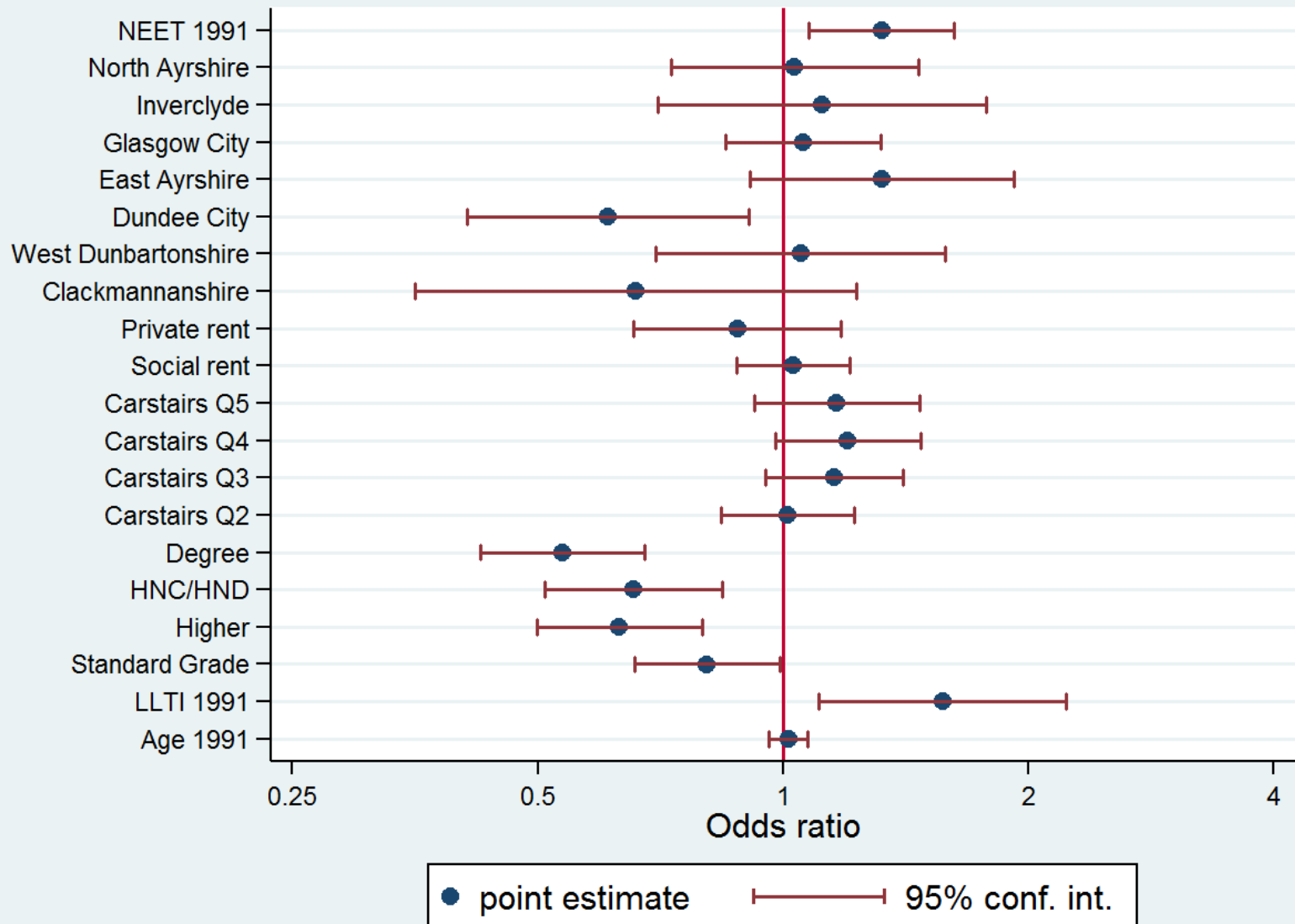


Hospitalisation, 2001-2010, women

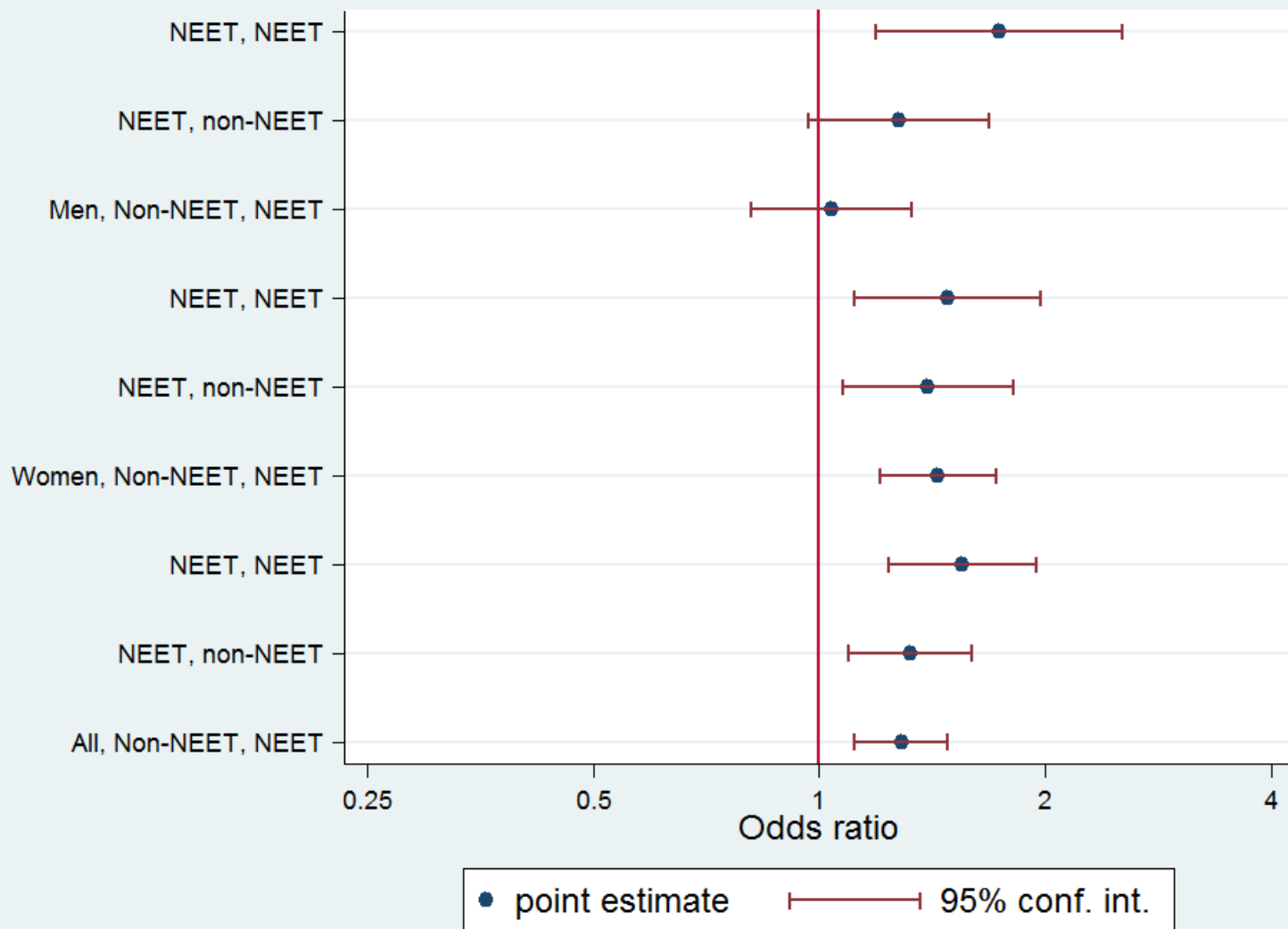




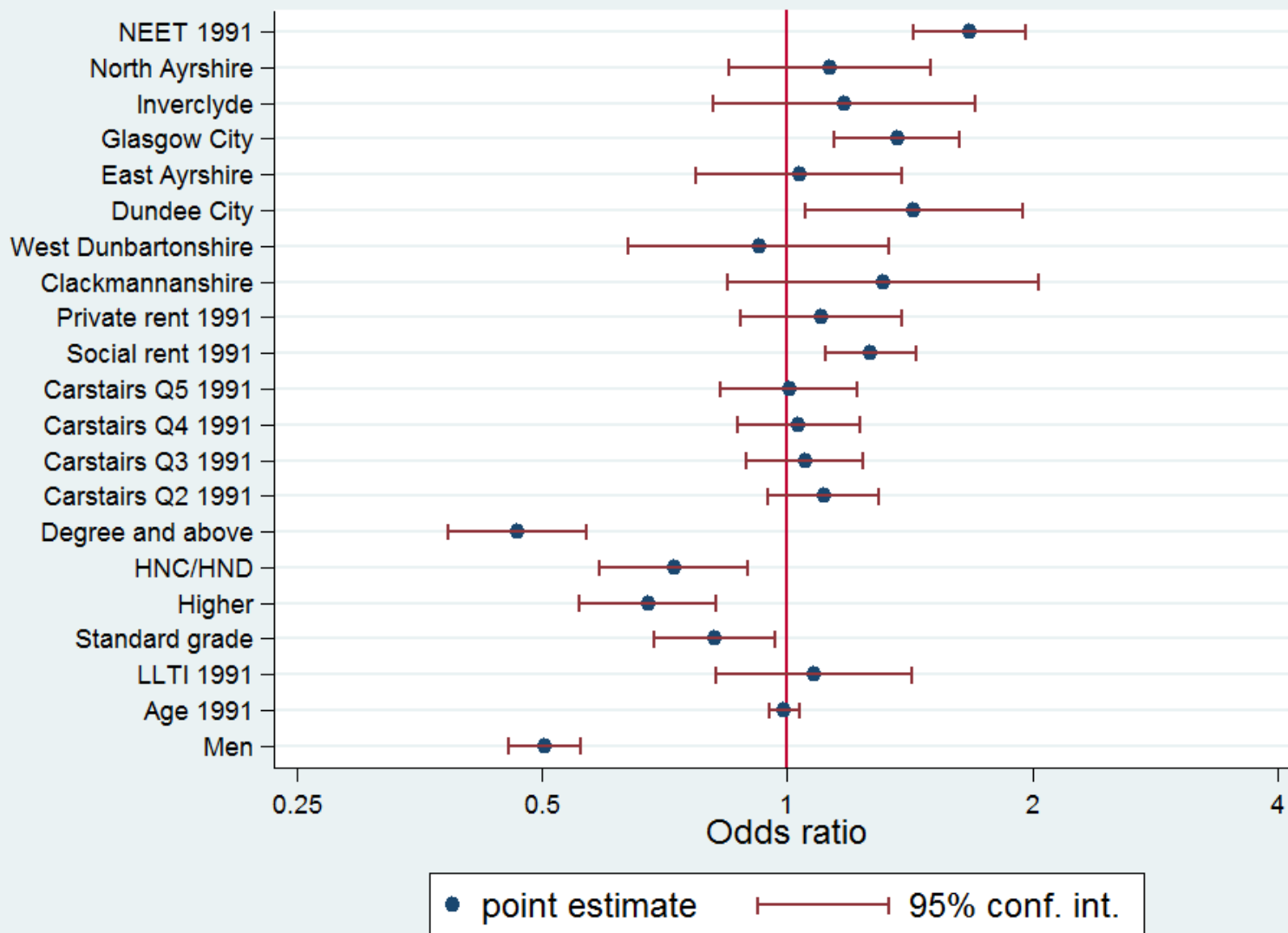
Hospitalisation, 2001-2010, men



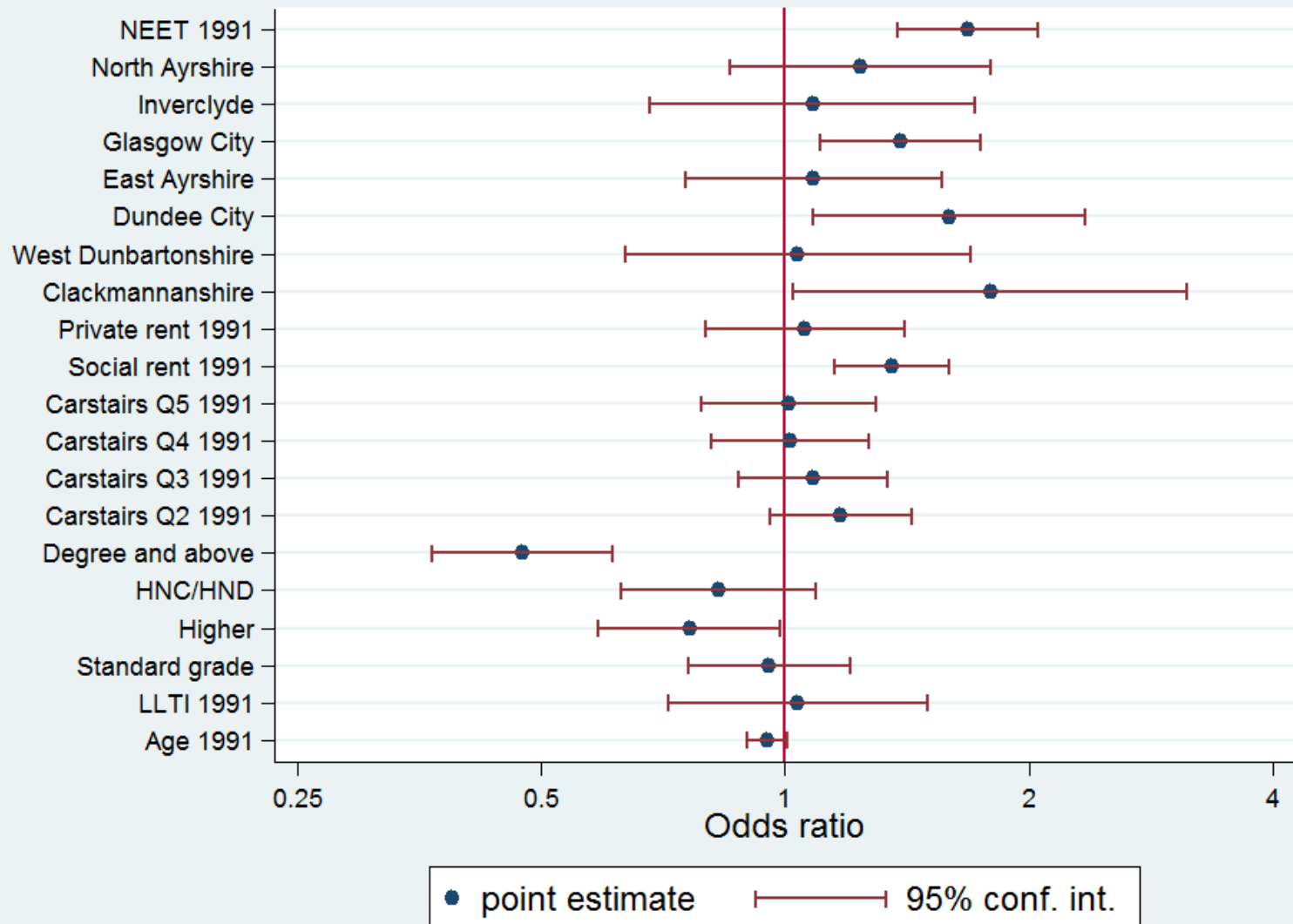
ORs and CIs of hospitalisation by 1991 & 2001 NEET status



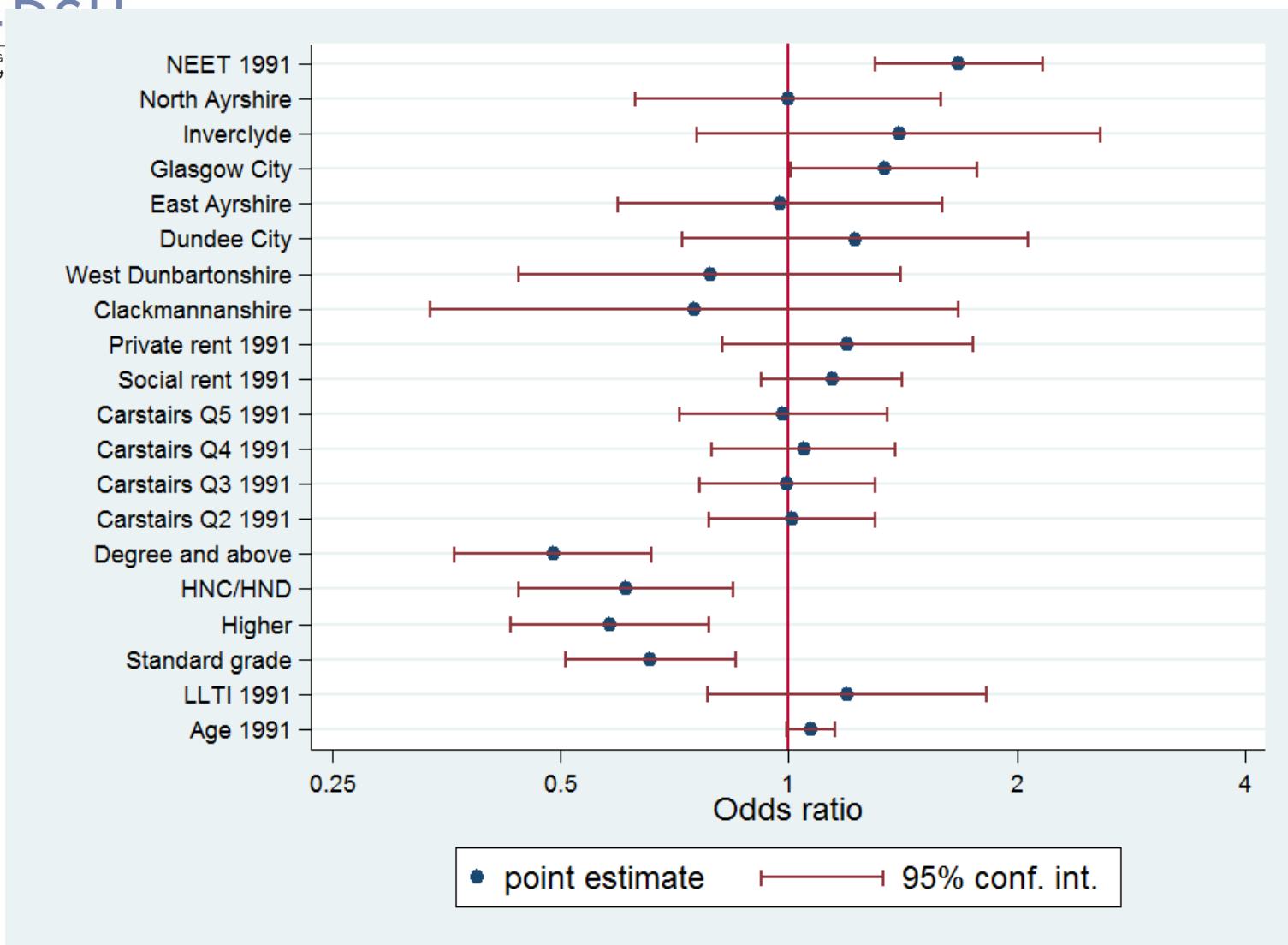
Depression and anxiety, 2009-2012, all



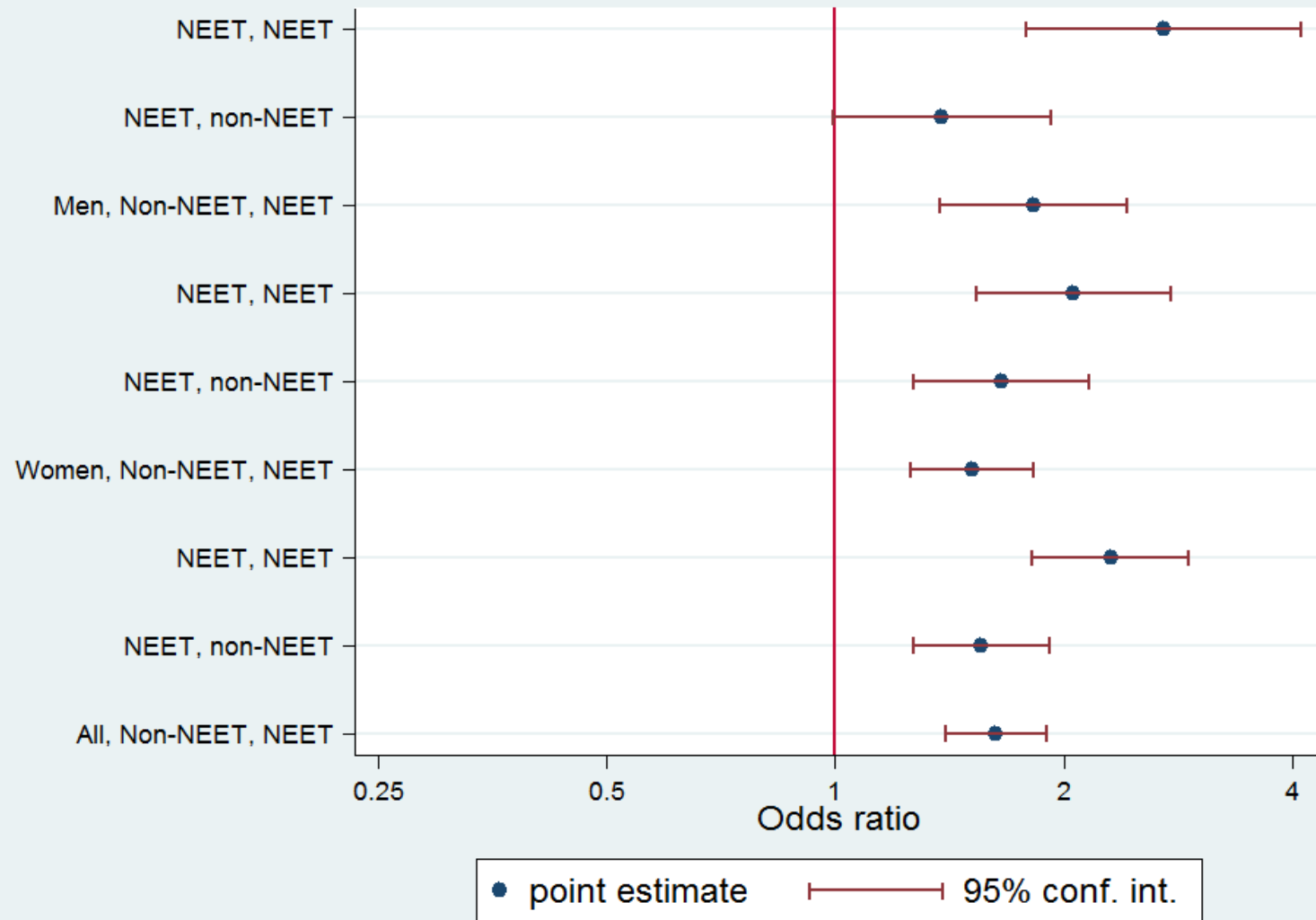
Depression and anxiety, 2009-2012, women



Depression and anxiety, 2009-2012, men



ORs and 95% CIs of depression & anxiety by 1991 & 2001 NEET status



Conclusions

- NEET experiences in 1991 were associated with higher risks of:
 - Hospitalisation
 - Depression and anxiety.
- The higher risk is consistent by gender.
- Being NEET persistently at two time points is associated with the highest risk of poor health, suggestive of cumulative effect
- The effect of 1991 NEET status is not mitigated by involvement of employment and education in 2001.

Conclusions

- NEET experiences have long term negative effects on health
- Policy intervention is needed to help NEET young people back to work/education

Acknowledgements

- Research team: Kevin Ralston, Dawn Everington, Gillian Raab, Elspeth Graham, Chris Dibben
- The help provided by staff of the Longitudinal Studies Centre - Scotland (LSCS) is acknowledged.
- The LSCS is supported by the ESRC/JISC, the Scottish Funding Council, the Chief Scientist's Office and the Scottish Government. The authors are responsible for the interpretation of the data. Census output is Crown copyright and is reproduced with the permission of the Controller of HMSO and the Queen's Printer for Scotland
- Thank support from the Employability, Skills and Lifelong Learning analysis research team of the Scottish Government