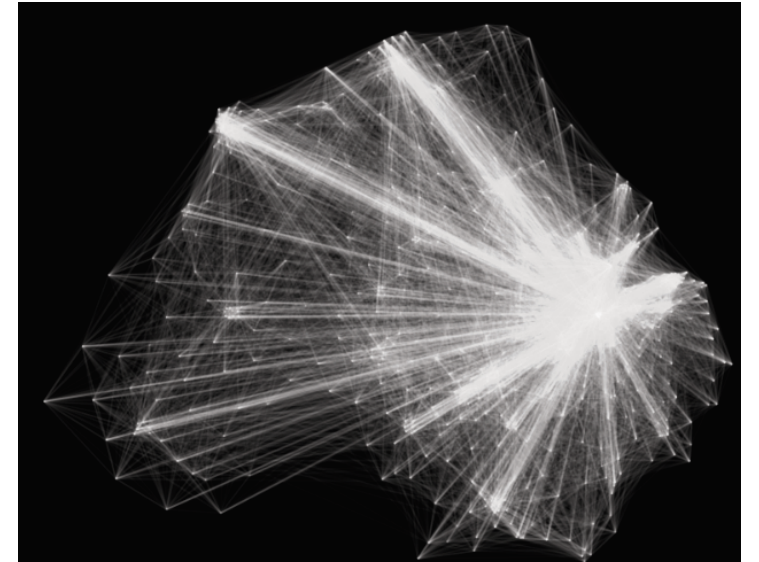


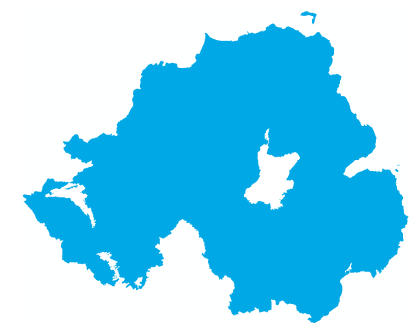
Selective Religious Migration across the Life course: Evidence from Northern Ireland 1981-2011



Brad Campbell
PhD Student
Population Geography
Queen's University Belfast



Research Questions



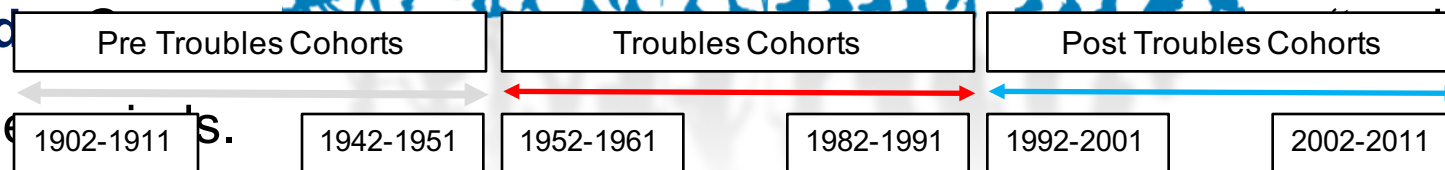
Aim: Understand how the propensity to move to a more/less religiously segregated area varies across the life course;

- **Age:** How does age at migration influence the key phases of the life course.

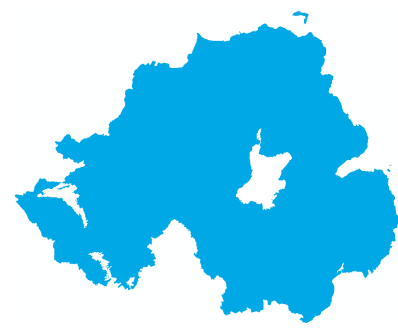
- **Cohorts:** Investigate how the time period of migration influences their migratory behaviour



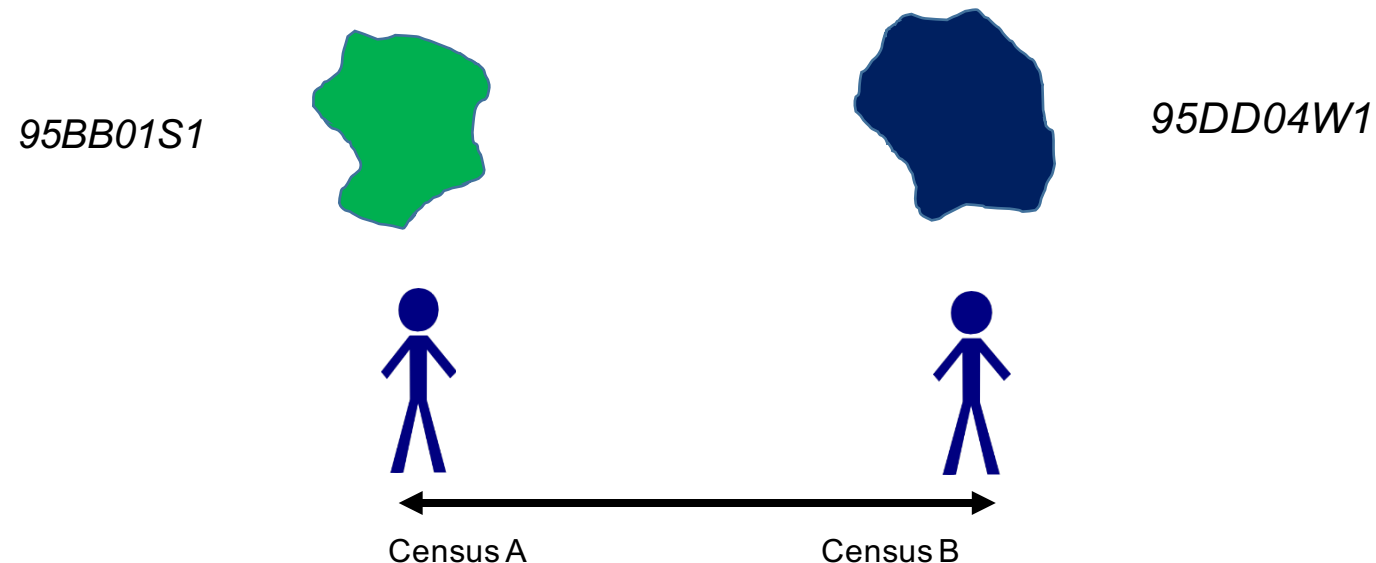
• **Time Period** of migration: 'troubles' time and 'post troubles' time periods.



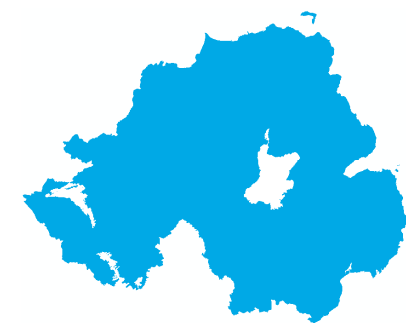
Data



- Draw on data from the Northern Ireland Longitudinal Study (NILS).
- Represents a c.28% sample of the NI population spanning 1981 to 2011 containing;
 - Census variables i.e. religion, age and social class.
 - Identify members whose area of residence is different between censuses.



Methodology



Measuring Segregation

- Simpsons Diversity Index: measure the level of religious diversity.
- Interaction Index (P): measure interaction between movers.
- Index of dissimilarity (D): measure the spatial unevenness of inflows.

Modelling Events

- Negative binomial regression;
 - Form of logistic regression for count data.
 - Predicts the chance of an event occurring through the rate ratio.

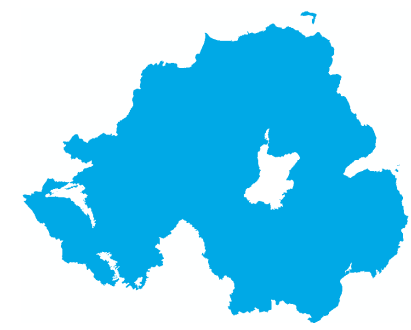
$$1 - \sum_{i=1}^k \frac{n_i(n_i - 1)}{n(n - 1)}$$

$$\sum_{i=1}^n \left[\left(\frac{x_i}{X} \right) \left(\frac{y_i}{t_i} \right) \right]$$

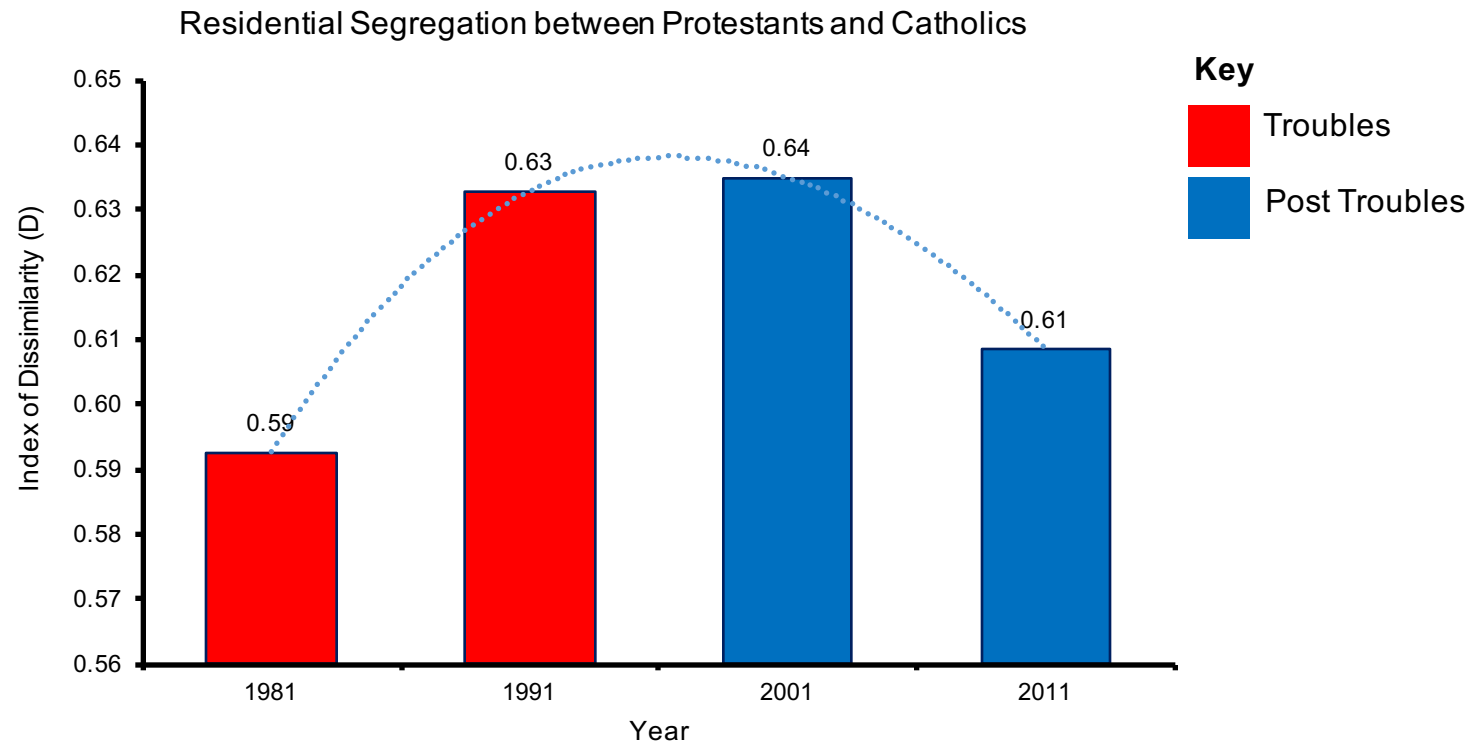
$$D = \frac{\sum_{i=1}^n |x_{1(i)} - x_{2(i)}|}{n}.$$

$$P = \frac{e^{a+bX}}{1 + e^{a+bX}}$$

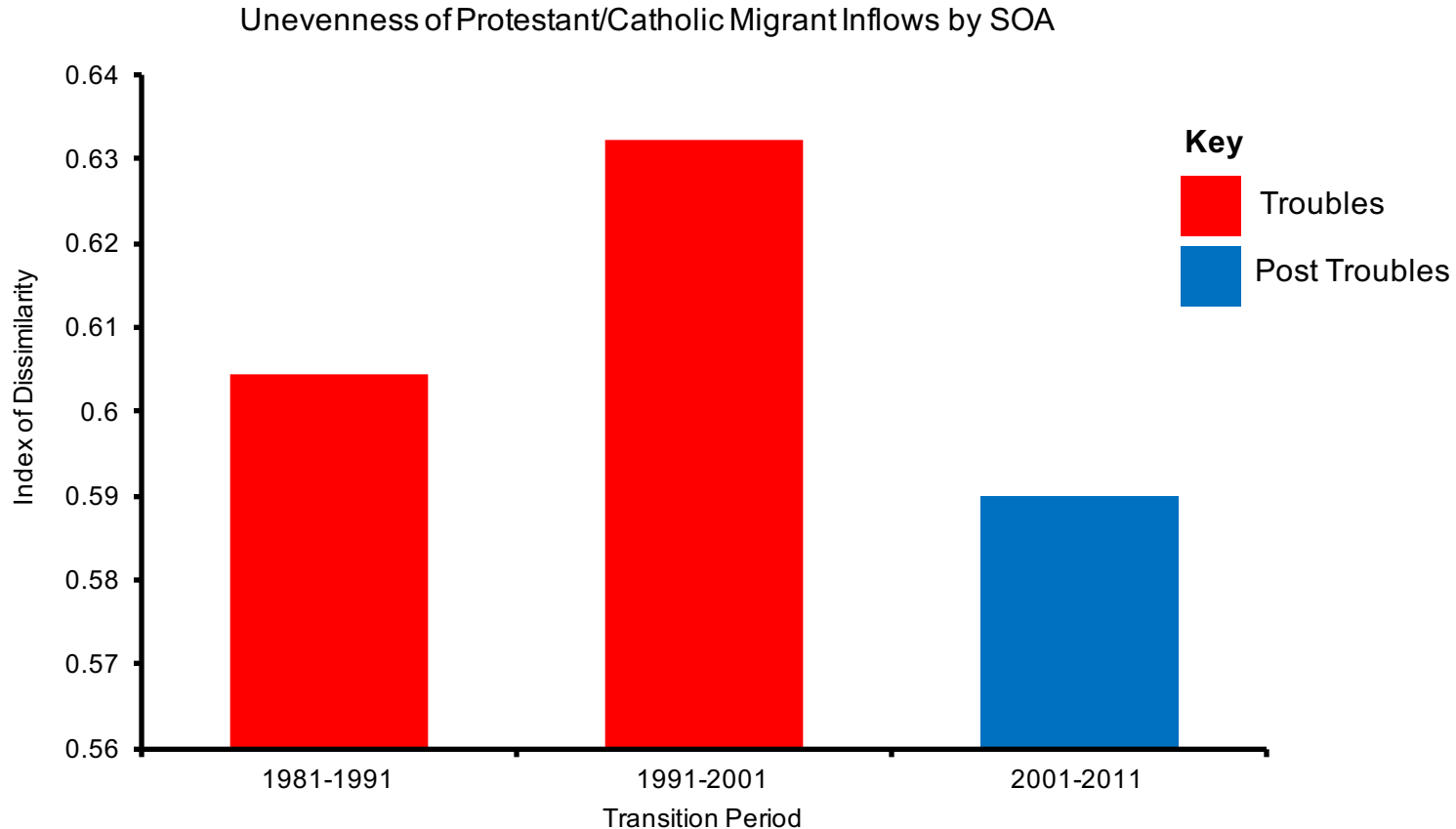
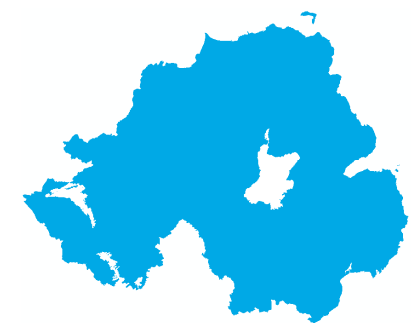
Context



- NI has experienced high levels of violence and political instability up until the late 1990s.
- The outcome has been the physical separation of people along ethno lines (Doherty and Poole, 1996).
- Key policy aim of the NI assembly to encourage greater mixing and desegregation (*CRU, 2005; Darby and Knox, 2004; OFMDM, 2013*).
- Signs of a decrease in segregation in the post Good Friday Agreement era (Smith and Chambers, 1991).

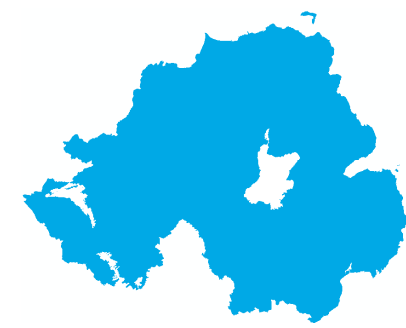


Time Period Analysis

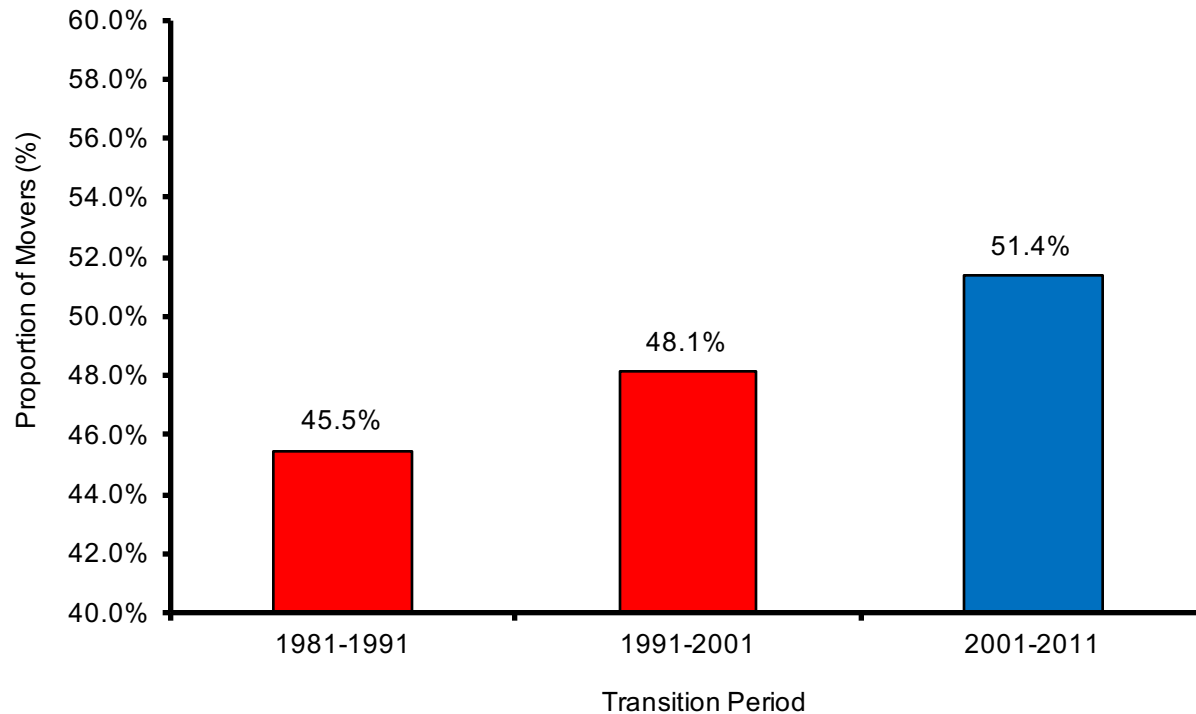


- Protestant and Catholic inflows were more spatially uneven during violent years.
- Signs that during periods of peace people are moving to dissimilar areas.

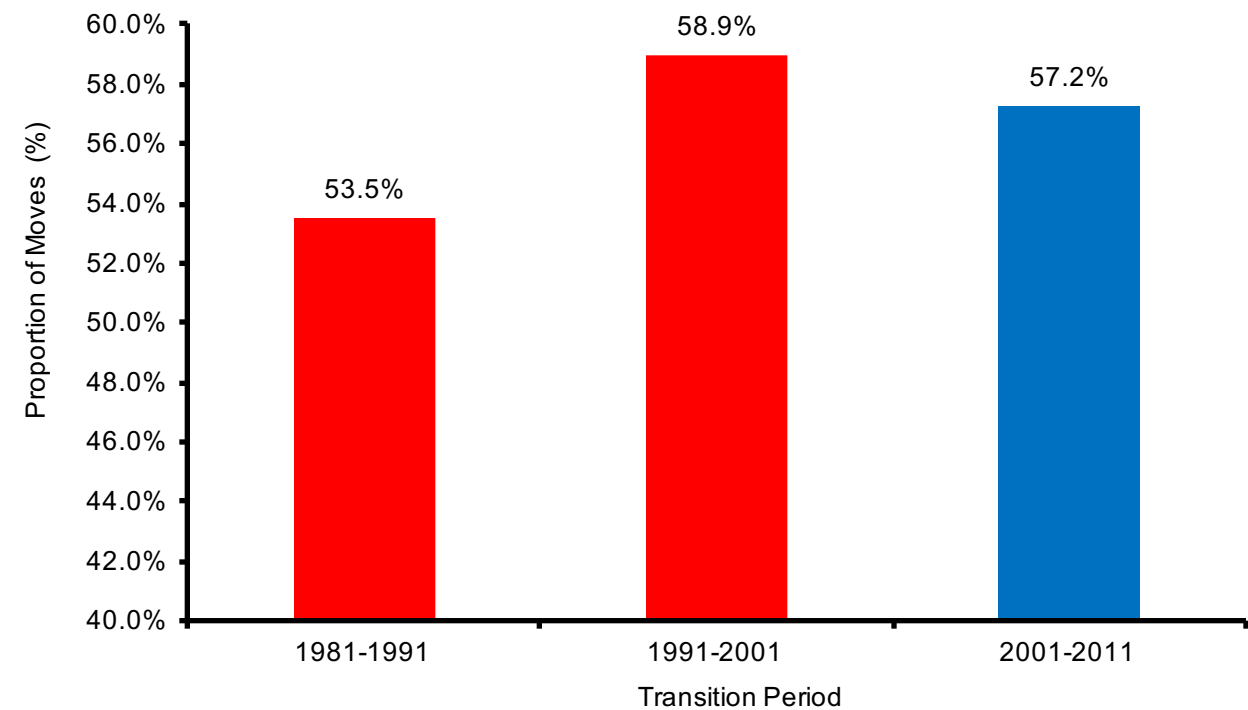
Movements to a Religiously Dissimilar Area



Moves to a More Catholic SOA by Protestants %

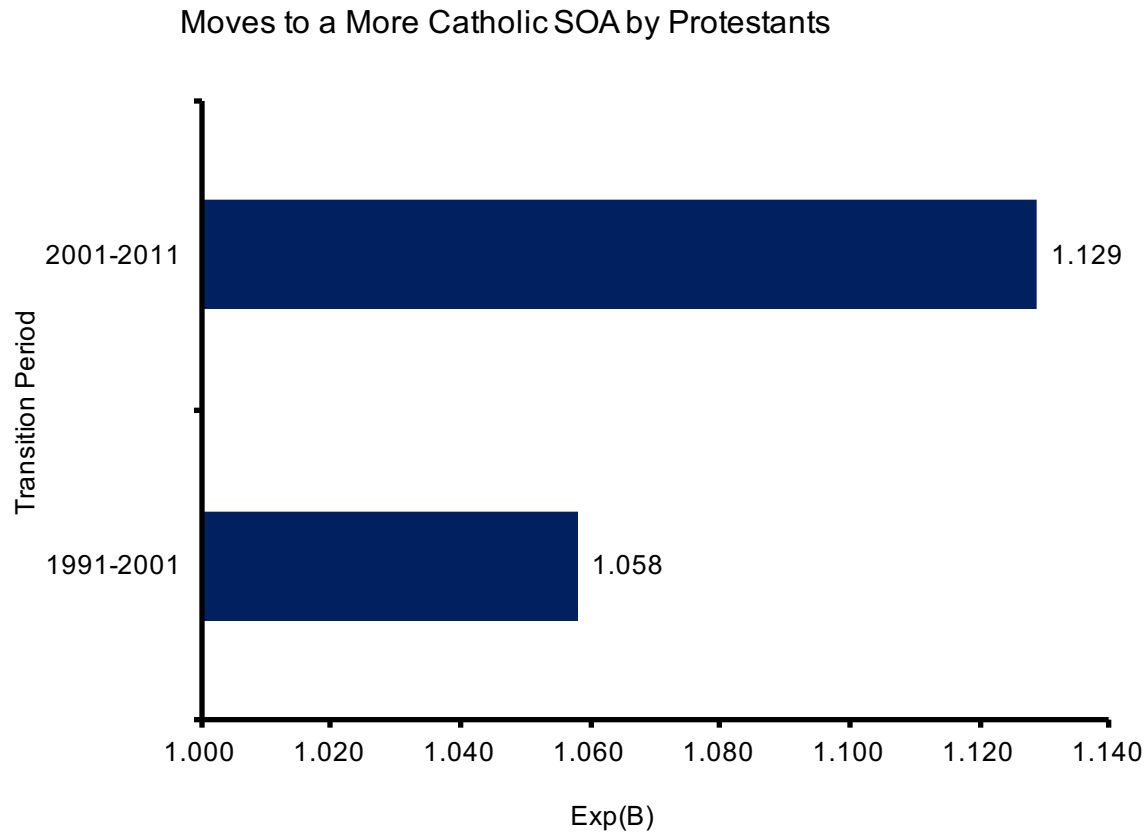
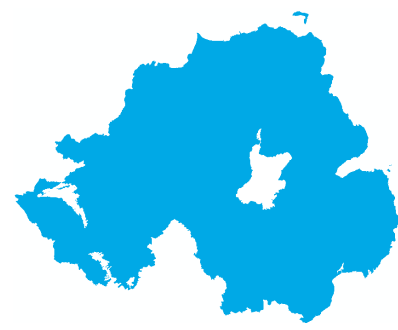


Moves to a More Protestant SOA by Catholics %

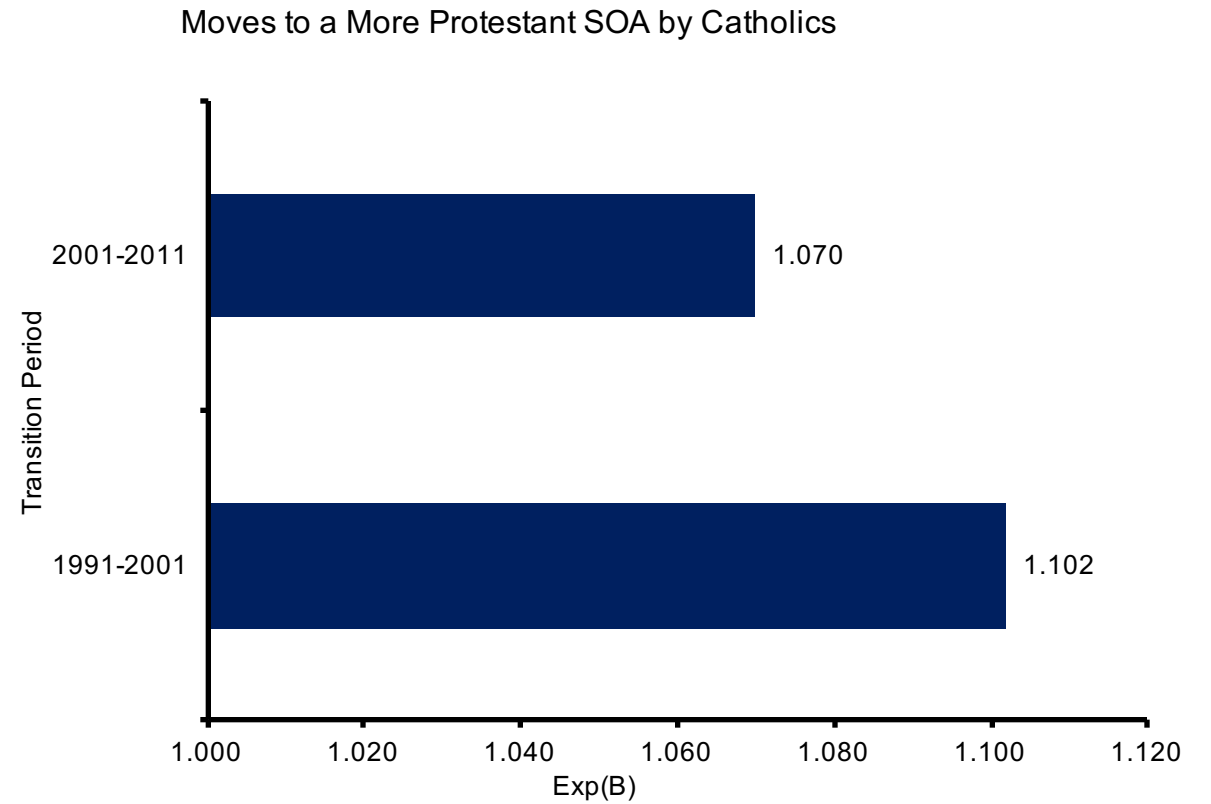


- Catholics are more likely to move to a religiously dissimilar area than Protestants.
- Over time there are signs of greater movements out of segregated areas.

Time Period

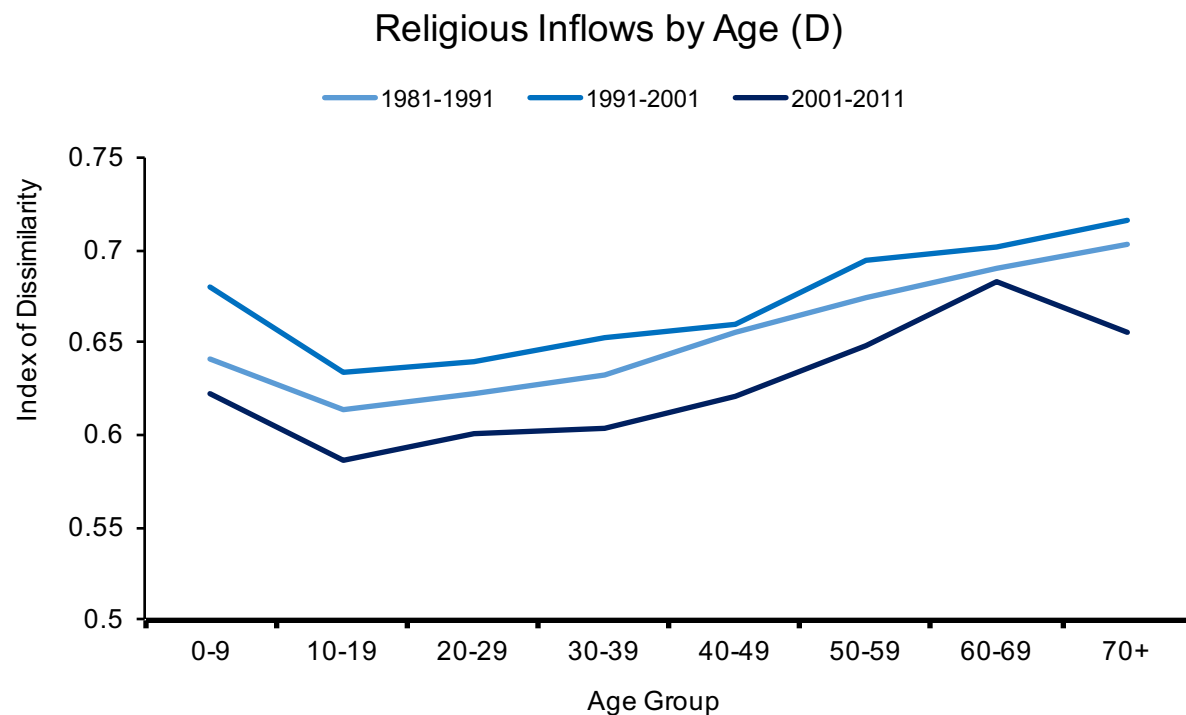
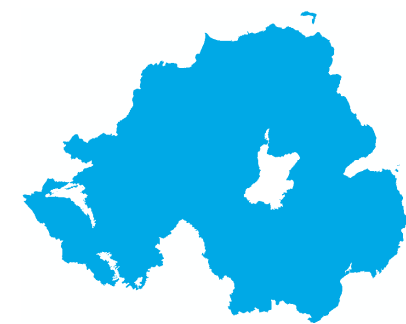


Reference 1981-1991



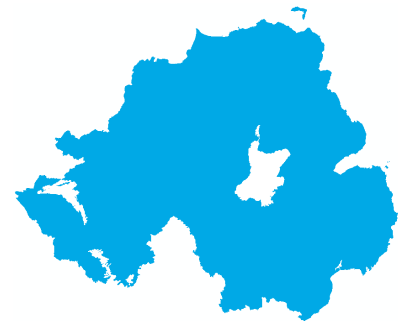
Reference 1981-1991

Age Analysis

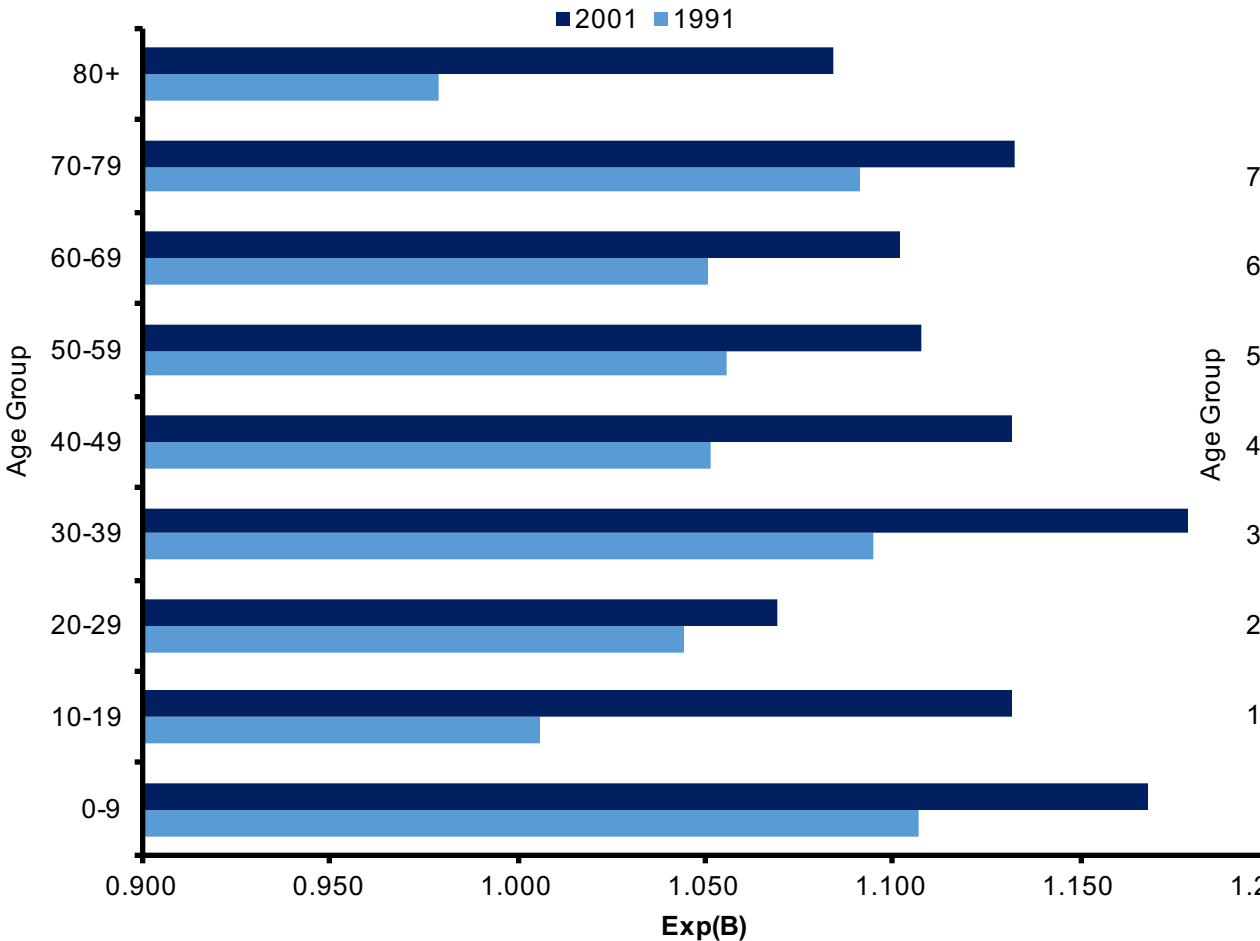


- Migratory behaviour is highly relational to age.
- Young people are the least segregated.
- As people age they are more likely to move into segregated areas.
- Overall decline in segregation between census years particularly for younger people.

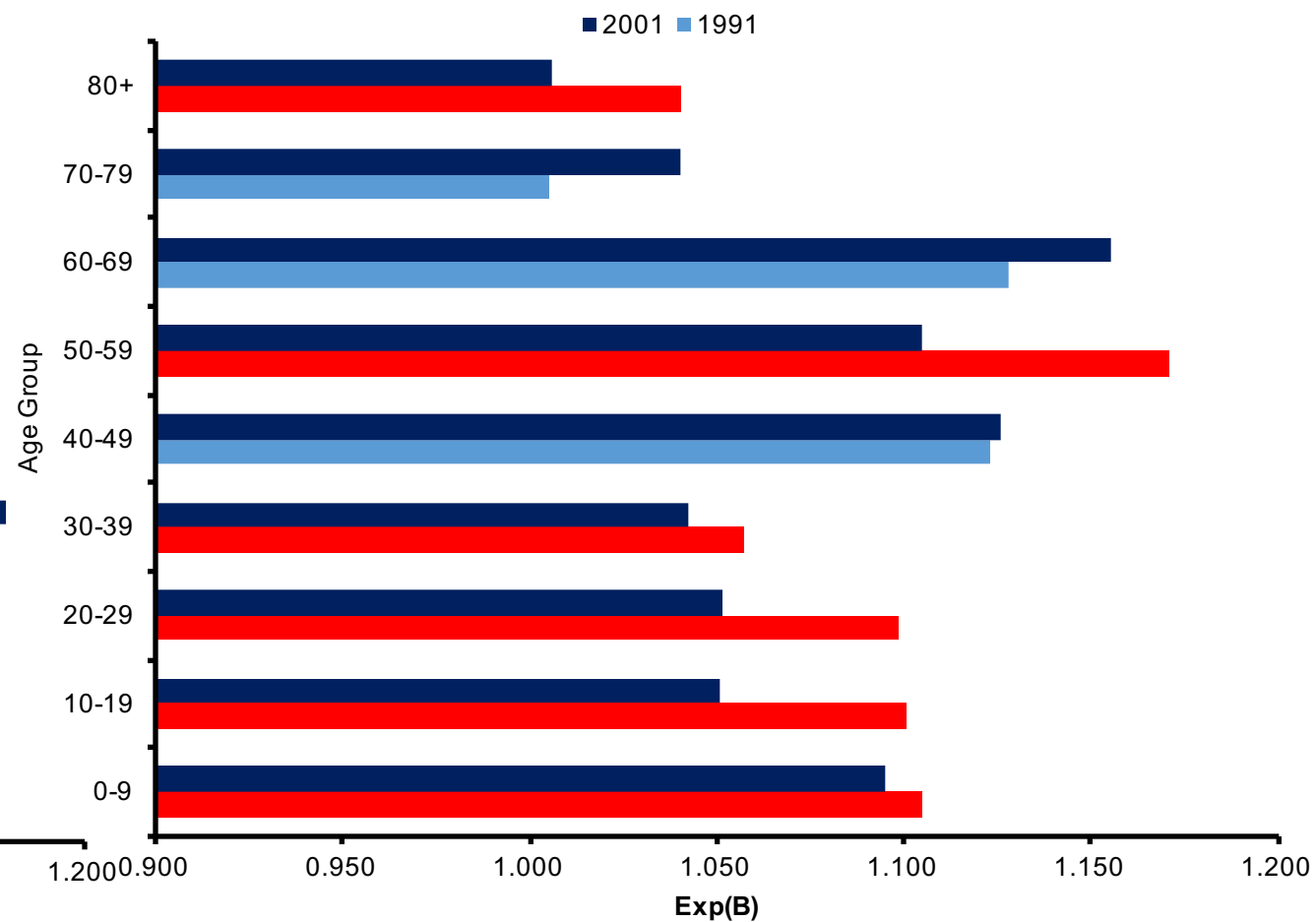
Age by Year Analysis



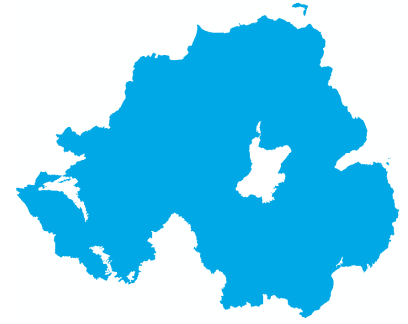
Moves to a More Catholic SOA by Protestants



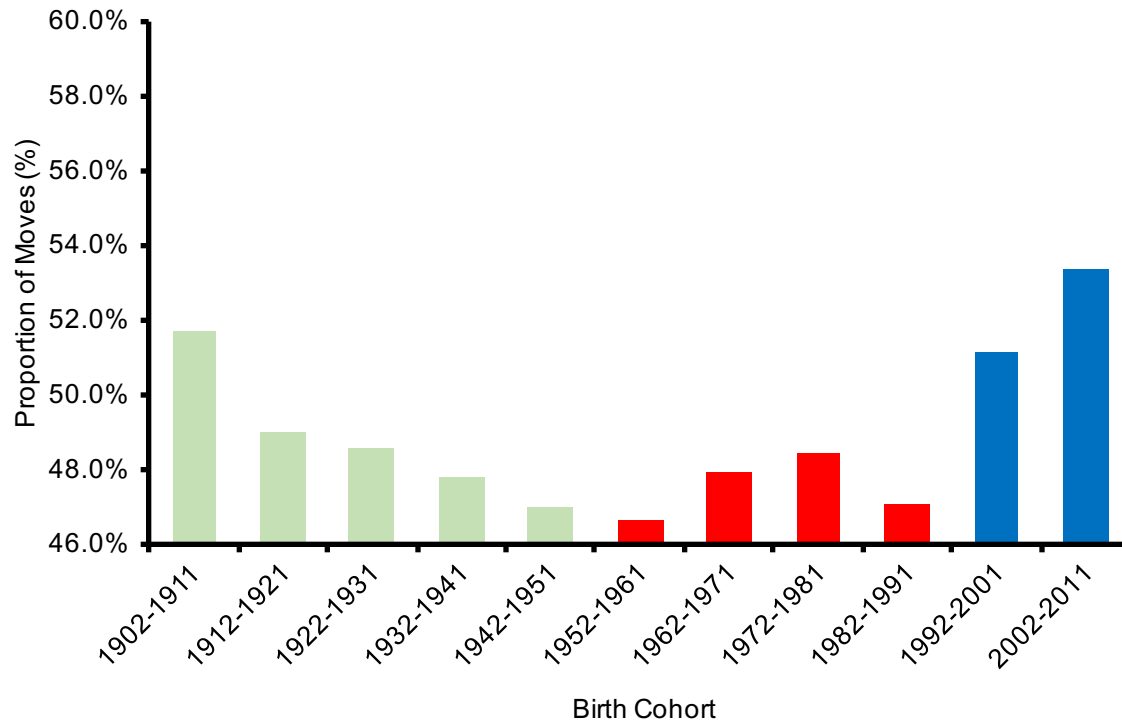
Moves to a More Protestant SOA by Catholics



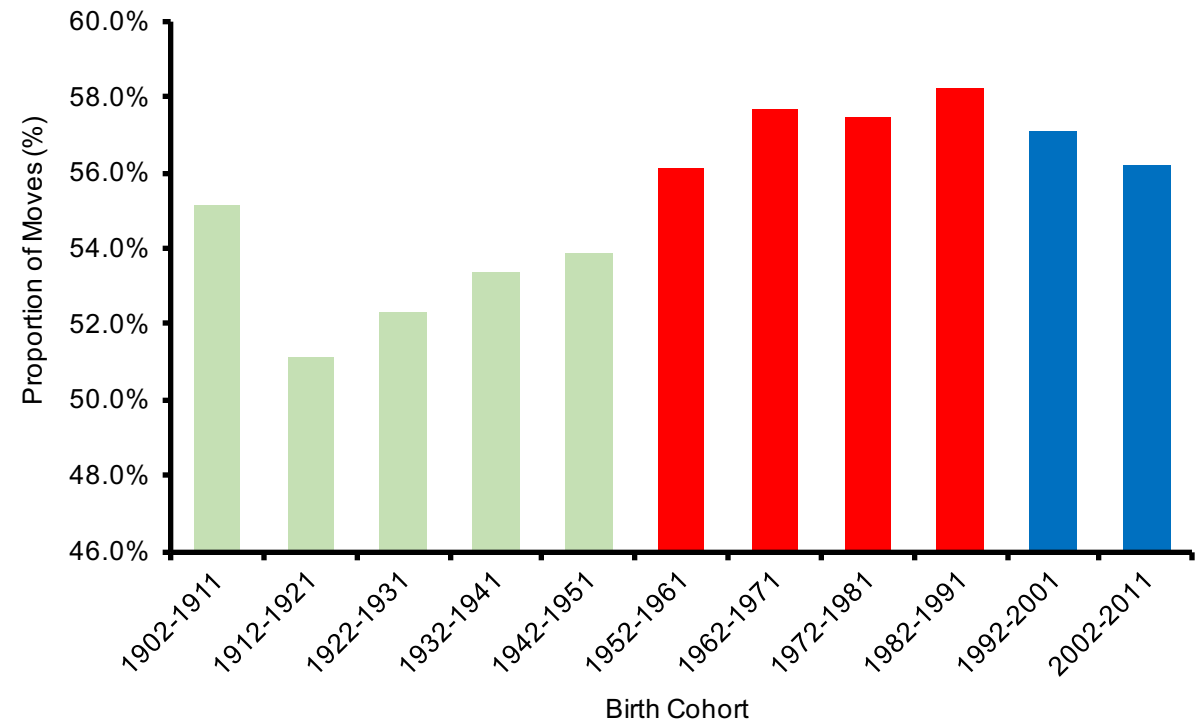
Cohort Analysis



Moves to a More Catholic SOA by Protestant Cohort

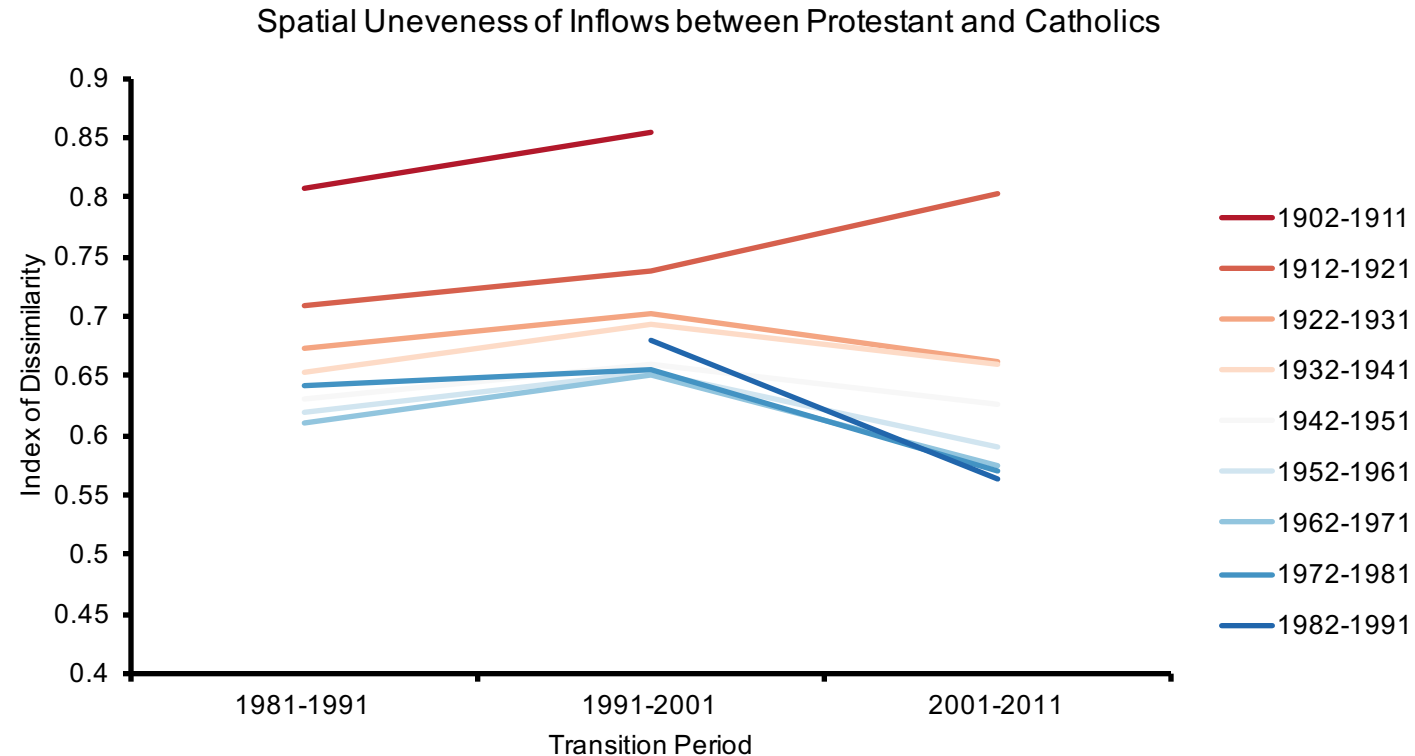
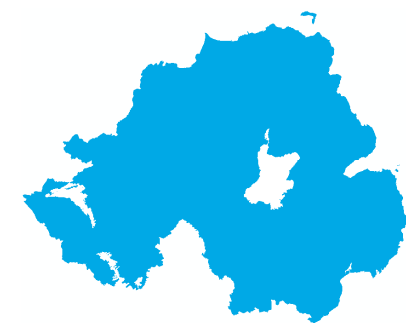


Moves to a More Protestant SOA by Catholic Cohort



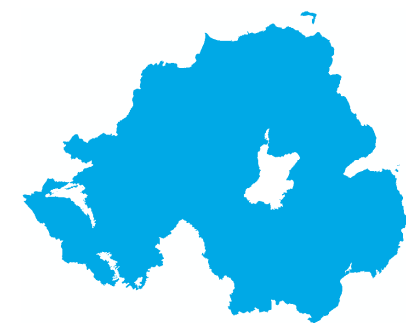
- Change in migratory behaviour can be explained by a combination of;
 - Individual behaviour.
 - Underlying contextual demographic change.

Cohorts by Time Period

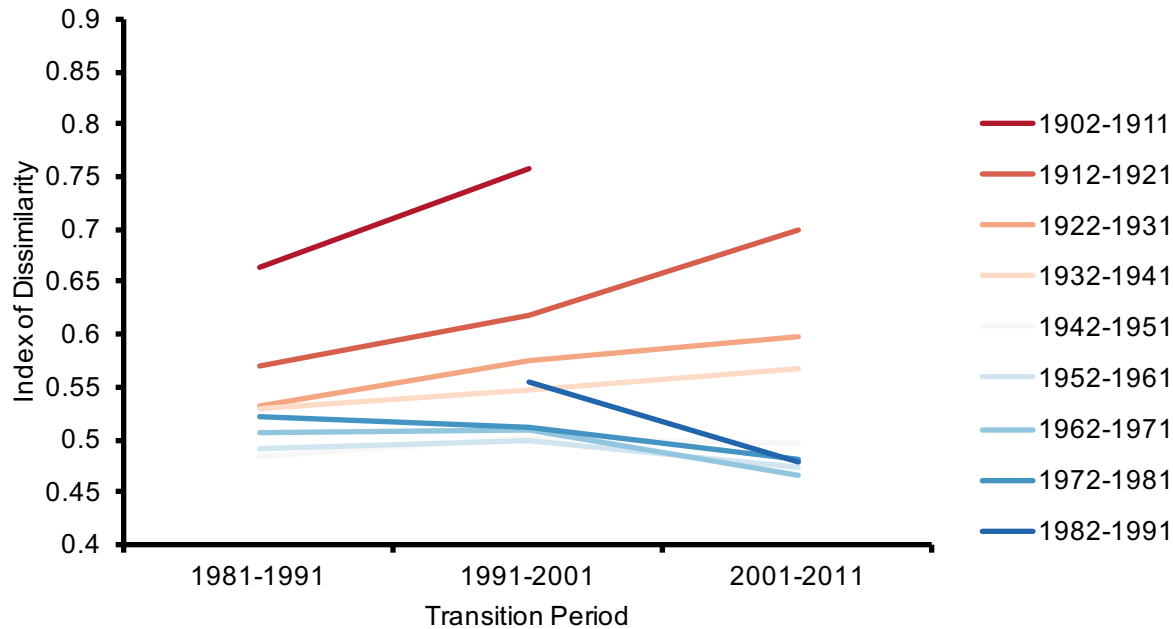


- The inflows of the 'pre troubles' cohorts have become more spatially uneven over time.
- Decline in segregated moves for birth cohorts post 1922 between 91-01 and 01-11.
 - Reflective of peace on the aggregate population.

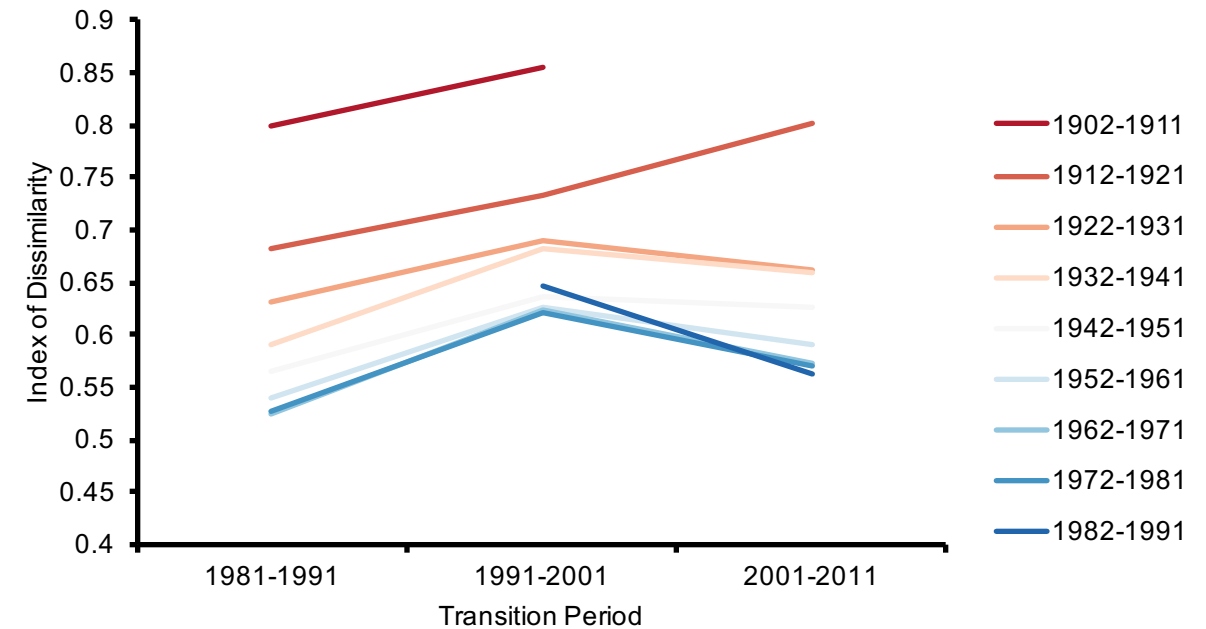
Unevenness of Inflows by Cohorts & Year



Temporal Change in the (un)evenness of Protestant inflows by Cohort

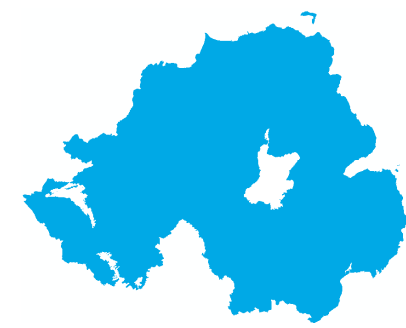


Temporal Change in the (un)evenness of Catholic inflows by Cohort

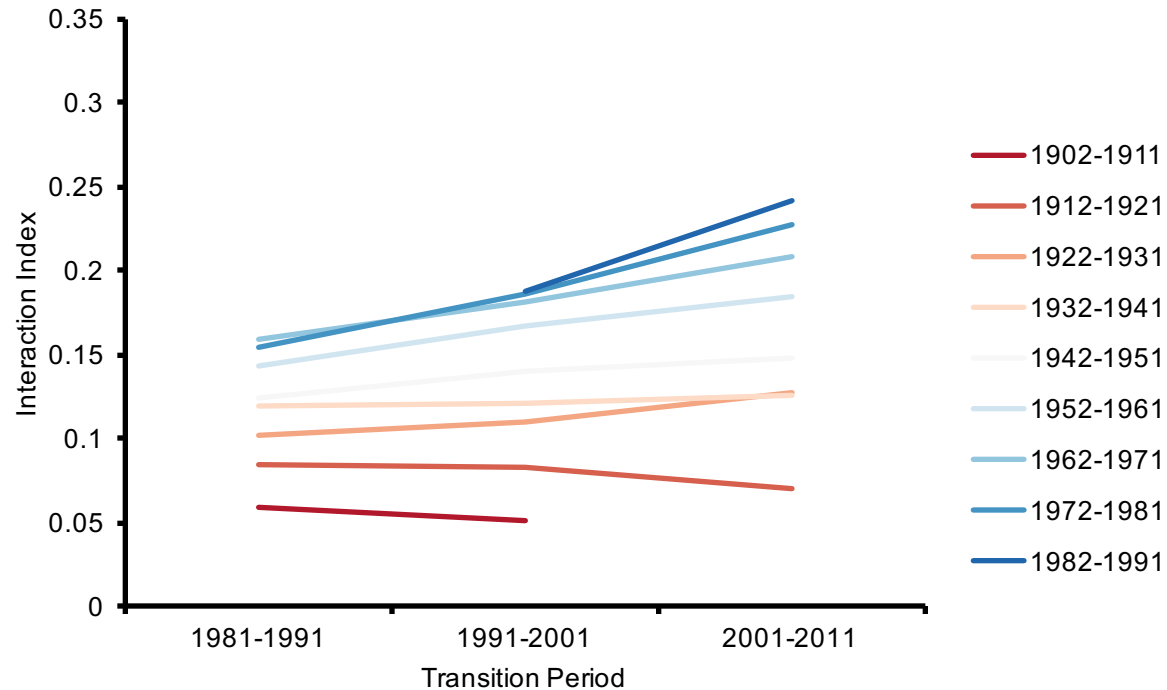


- Greater spike in segregation for Catholics than Protestants between 81-91 and 91-01.
- Decline in segregation is more pronounced for post 1922 Catholic cohorts between 91-01 and 01-11.

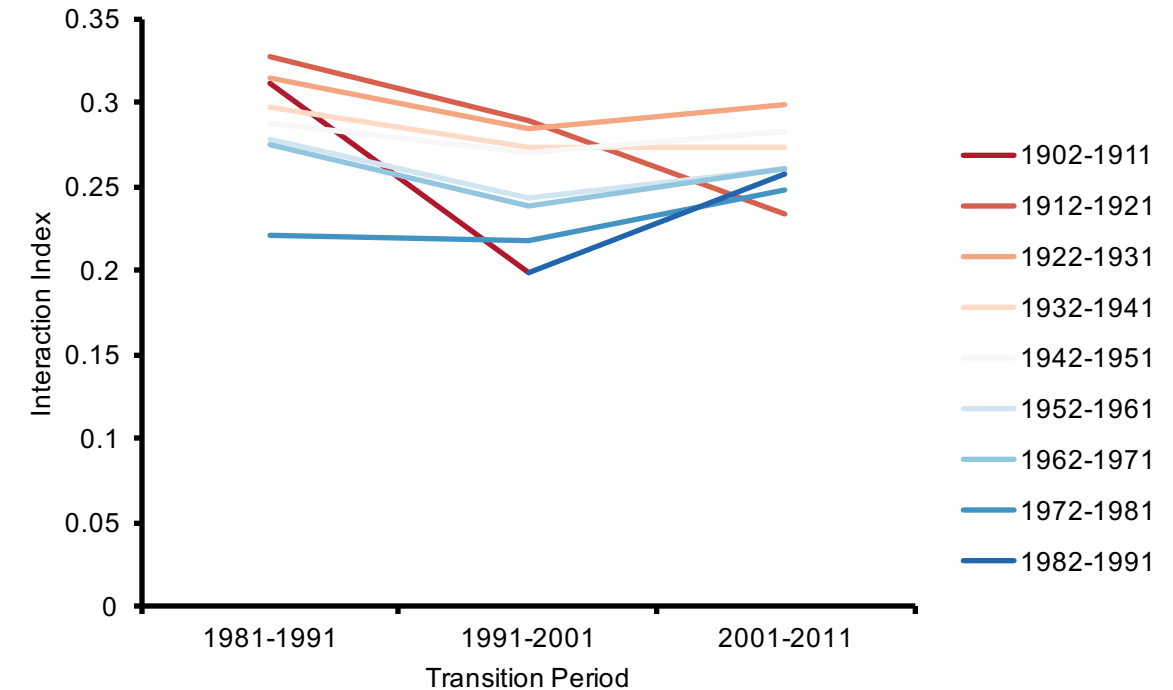
Interaction between Movers



Interaction between Protestant-Catholic Movers

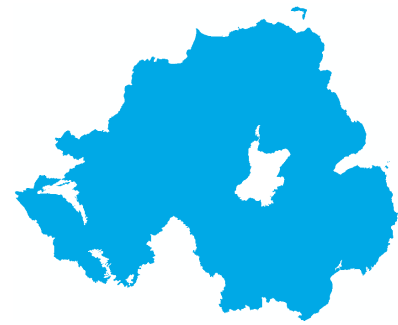


Interaction between Catholic-Protestant Movers



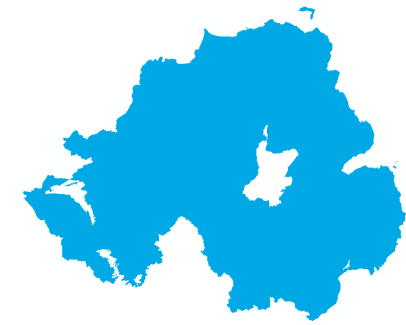
- Signs that the younger cohorts are moving together;
 - They are more likely to meet migrants of the opposite religion than older cohorts.

Conclusion



- Evidence to suggest that in the presence of peace people are more likely to move to a less segregated area.
 - However there are variations between religions and by age.
- Evidence that the 'post troubles' cohorts are moving to similar areas and are becoming increasingly mixed.

References



Office of the First Minister and deputy First Minister (OFMdFM). (2013). 'Together: Building a United Community', (23 May 2013), Belfast: OFMdFM.

Community Relations Unit (CRU). (2003) A Shared Future: A Consultation Paper on Improving Relations in Northern Ireland. Belfast: Community Relations Unit (CRU), Office of the First Minister and Deputy First Minister (OFMDFM).

Darby, J., and Knox, C. (2004) 'A Shared Future': A Consultation Paper on Improving Relations in Northern Ireland. Belfast: Community Relations Unit (CRU), Office of the First Minister and deputy First Minister (OFMdFM).

Doherty, P., and Poole, M. (1996). 'Ethnic Residential Segregation in Northern Ireland'. Coleraine: Centre for the Study of Conflict, University of Ulster.

Smith, D., J., and Chambers, G. (1991) 'Inequality in Northern Ireland'. Oxford: Clarendon Press; New York: Oxford University Press.

Acknowledgements

‘The help provided by the staff of the Northern Ireland Longitudinal Study (NILS) and the NILS Research Support Unit is acknowledged. The NILS is funded by the Health and Social Care Research and Development Division of the Public Health Agency (HSC R&D Division) and NISRA. The NILS-RSU is funded by the ESRC and the Northern Ireland Government. The authors alone are responsible for the interpretation of the data and any views or opinions presented are solely those of the author and do not necessarily represent those of NISRA/NILS.’