



SLS-DSU

SCOTTISH LONGITUDINAL STUDY
DEVELOPMENT & SUPPORT UNIT

Young people not in employment education or training – NEET: an analysis of 2011 Census data examining the economic activity of young people NEET in 1991

Ralston, K¹. Dawn Everington² Feng, Z².

Dibben, C¹.

1. University of Edinburgh 2. University of St Andrews
2. Email: kev.ralston@ed.ac.uk, tel: 0131 3144596



THE UNIVERSITY
of EDINBURGH



University of
St Andrews



National
Records of
Scotland



Background

- Project undertaken in conjunction with colleagues from the Employability, Skills Life Long Learning Directorate at the *Scottish Government*
- Definition:
 - **NEET**—young people **N**ot in **E**mployment, **E**ducation or **T**raining
 - In Scotland NEETs are usually defined those aged 16-19.
- The high level of NEETs is regarded as a social problem
- Research question:
 - To what extent does NEET status affect economic activity in later life?

Methods

- Logistic regression
 - Data: Scottish Longitudinal Study
 - Sample: 16-19 at 1991
 - Outcome:
 - economically active versus economically inactive at 2011.
 - Active: defined as either in part time or full time paid employment or in education
 - Inactive: defined as unemployed, sick or disabled, retired and other
 - Confounders: Sex, Age, Long Term Limiting Illness 91 & 01, interaction of NEET 91 by economic activity at 01, Educational Attainment at 01, Council Areas-NEET 'hotspots' and Carstairs 91.
- Descriptive comparison of occupational position at 2011 using NS-SEC

Data: NEETS

% NEET in 1991 by gender

	Men	Women	Total, n
Non-NEET	50	50	12595
Unemployed/other/retired	57	43	1564
Permanently Sick	52	48	102
Looking after home/family	4	96	306

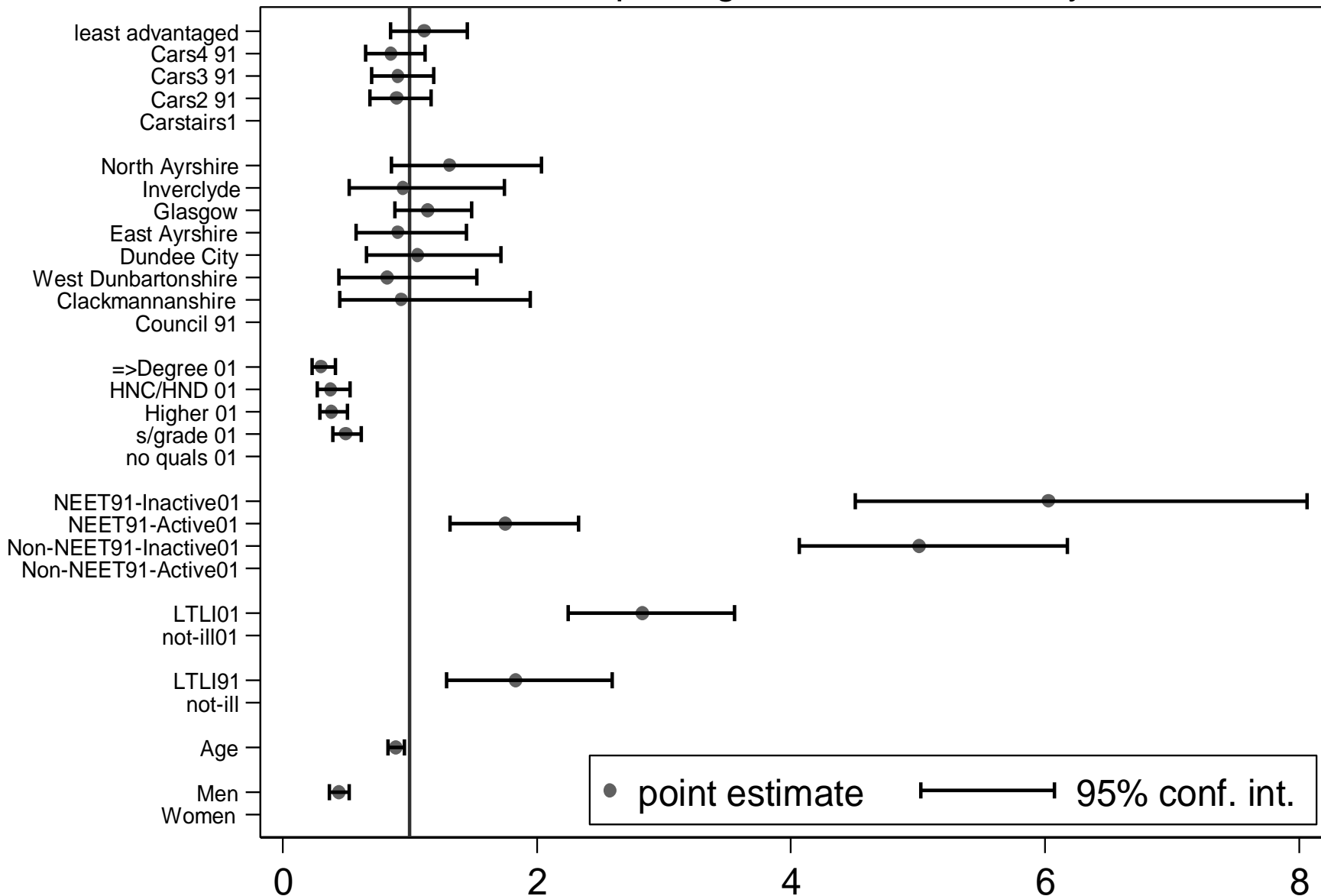
$\chi^2 = 0.00$ Cramér's V = 0.15

Source SLS

Economic Activity 2011

% Economically Active 2011			
	% Economically Active	% Not Active	Total
1991 NEET	72	28	1265
1991 Non NEET	90	10	8979
Source, SLS, n= 10244 $\chi^2 = 0.000$ Phi=0.18			

Odds ratio of reporting Economic Inactivity at 2011:



Source: SLS, n=8073

Conclusion

- There is a negative association between NEET status in 1991 and economic activity in 2011
- For those in work there is scarring
- Only possible to assess whether there is a NEET effect using longitudinal follow up
- The SLS provides a sample size where this kind of analysis is possible

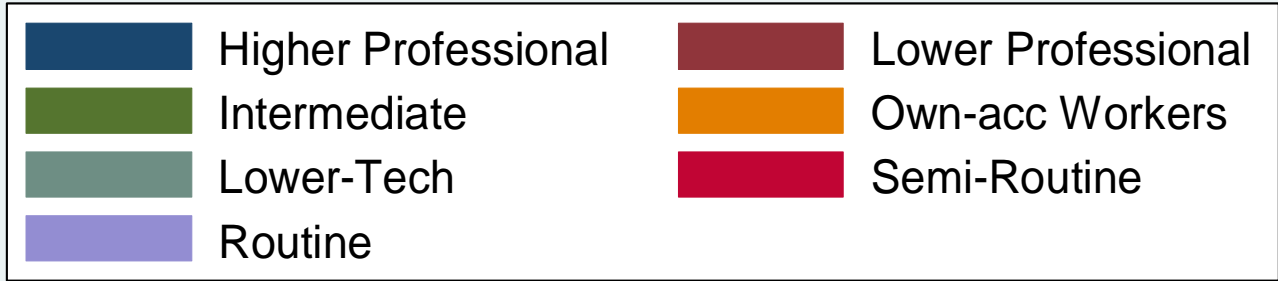
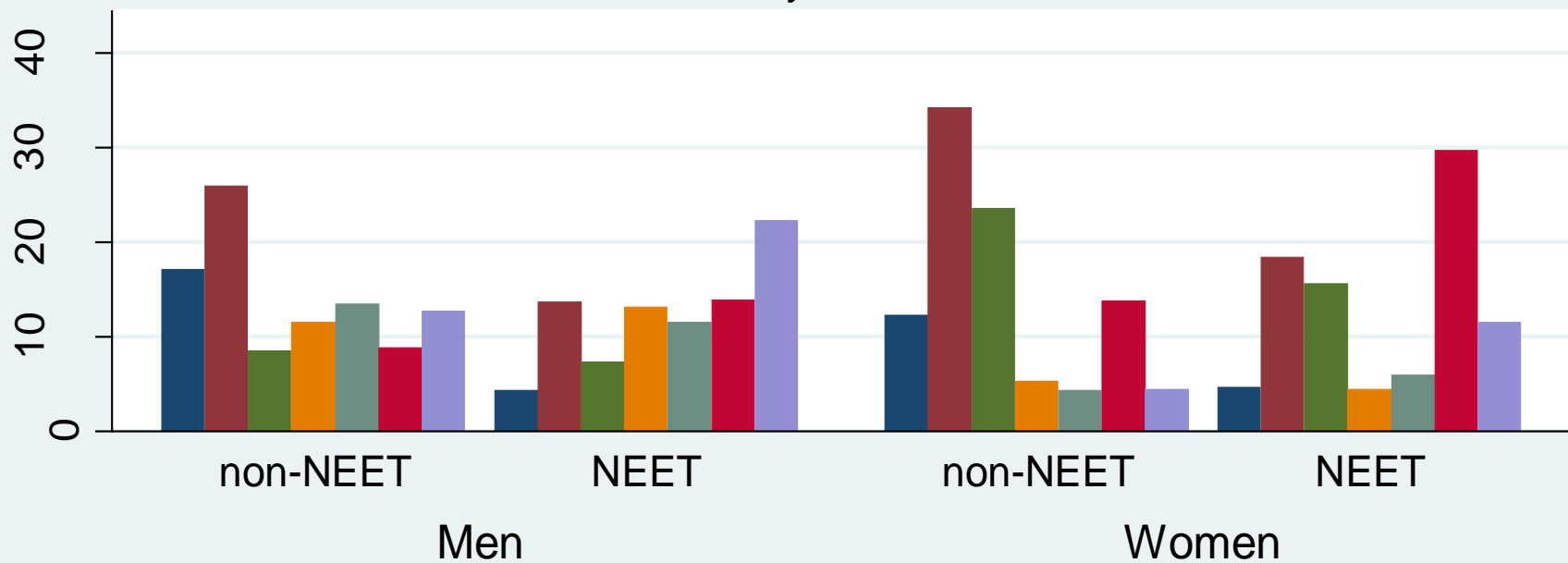
Data

Economically Active 2001, 2011		
	% non-NEET 1991	% NEET 1991
Active both 2001 and 2011	84	56
Active 2001, not active 2011	5	8
Not Active 2001, active 2011	6	17
Inactive both 2001 and 2011	4	18
Total	7306	958

Source, SLS, n= 8264
 $\chi^2 = 0.000$
 Gamma=0.59

Percentage of those in work at Census 2011

by NS-SEC categories, sex
and whether they were NEET in 1991



chi-squared: 0.00, gamma men:0.43, gamma women: 0.45

Source: Scottish Longitudinal Study